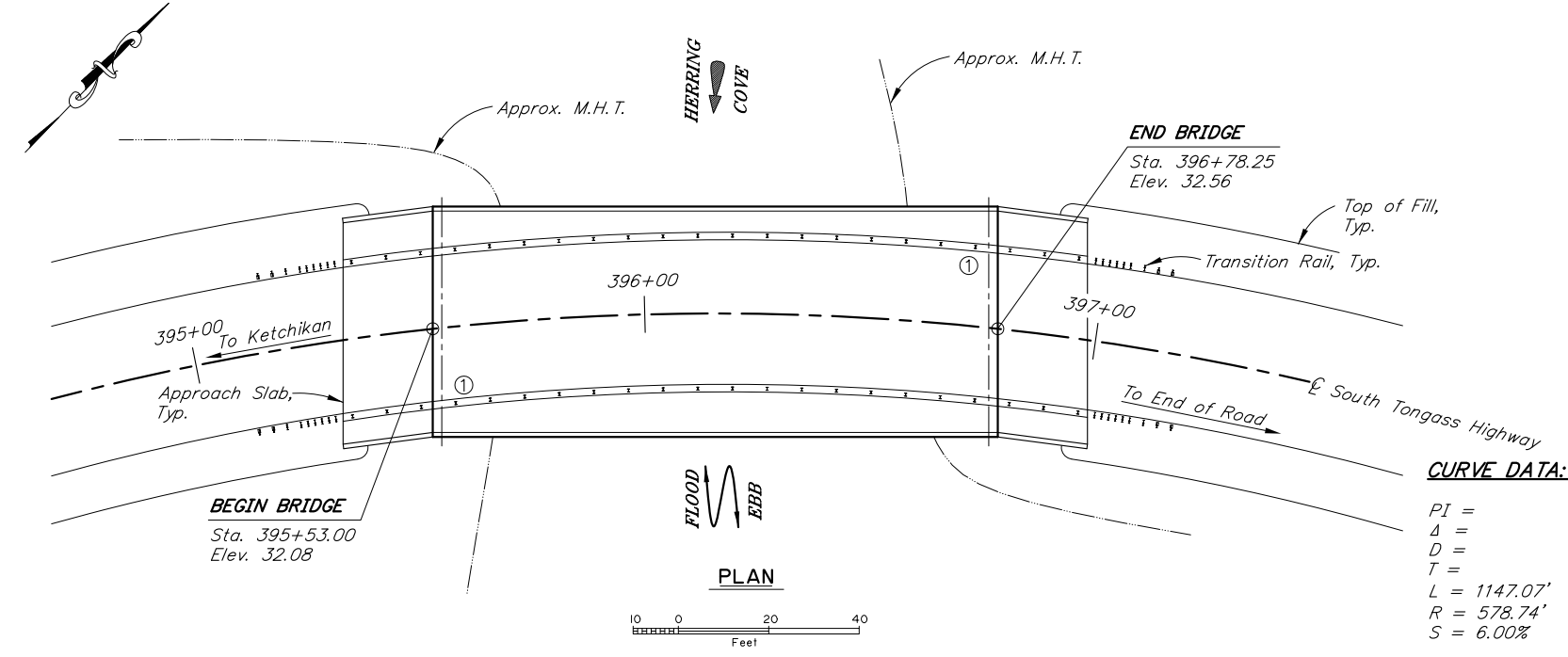
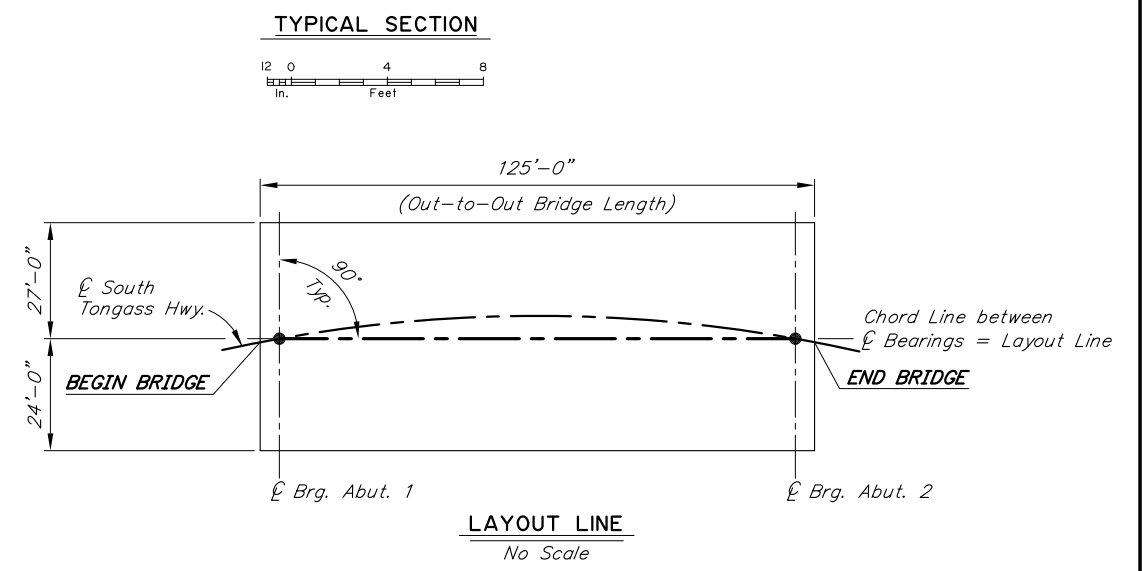
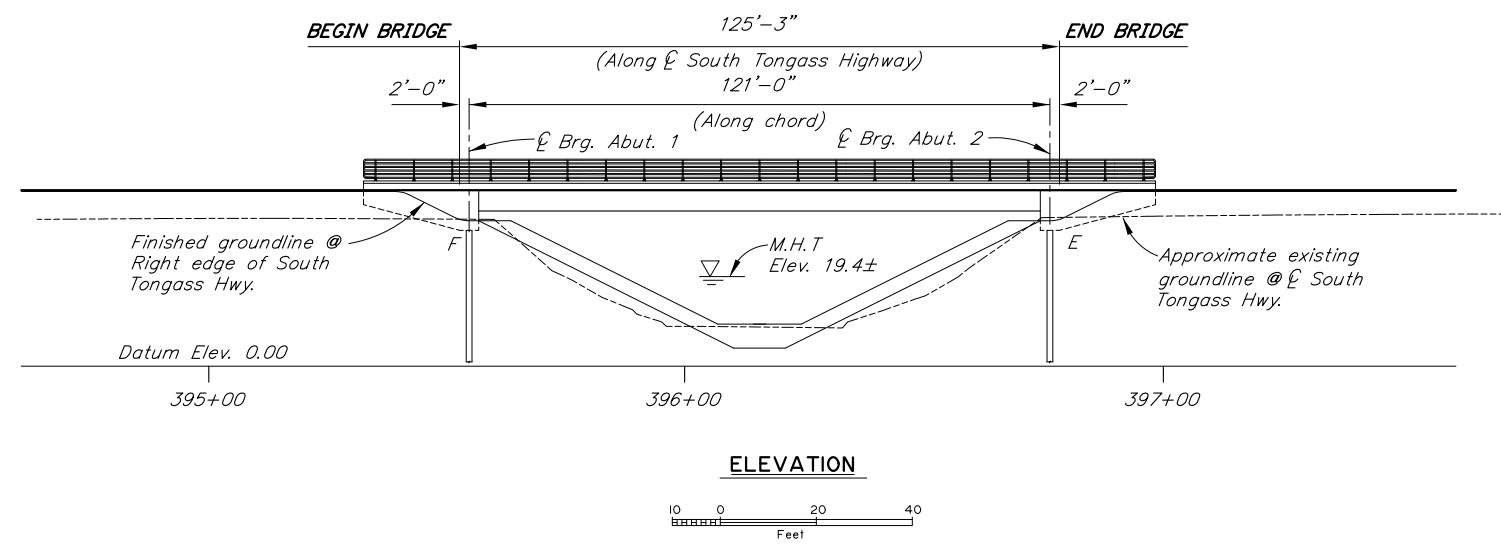
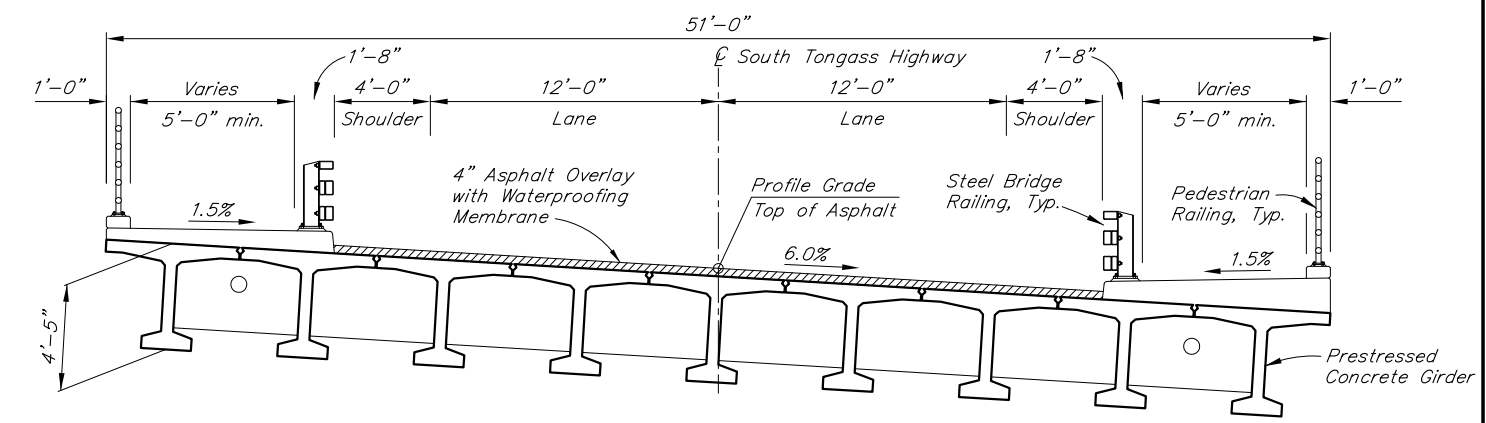
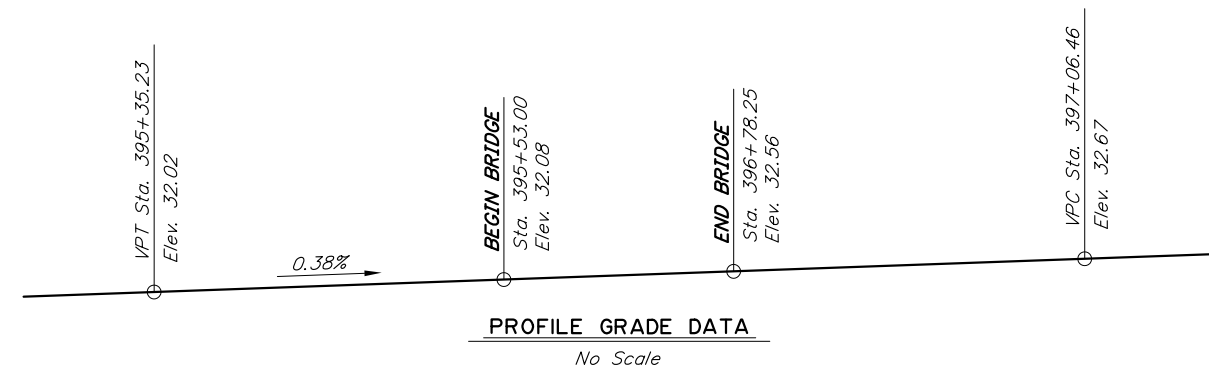


STATE	PROJECT DESIGNATION	YEAR	SHEET NO.	TOTAL SHEETS
ALASKA	SFHwy00072/0902043	2019	N1	TtShts



**CURVE DATA:**  
 PI =  
 Δ =  
 D =  
 T =  
 L = 1147.07'  
 R = 578.74'  
 S = 6.00%

DRAWING INDEX	
TITLE	DWG. NO.
GENERAL LAYOUT	1
SITE PLAN	2
RIPRAP LAYOUT	3
RIPRAP DETAILS	4
ABUTMENT 1	5
ABUTMENT 2	6
ABUTMENT DETAILS	7
WINGWALLS	8
FRAMING PLAN AND TYPICAL SECTION	9
GIRDERS	10
GIRDER DETAILS	11
SIDEWALK DETAILS	12
APPROACH SLABS	13
PEDESTRIAN RAILING	14
STEEL BRIDGE RAILING	15
THREE BEAM TRANSITION RAIL	16
LOG OF TEST BORINGS	17-

## PRELIMINARY PLAN


DRAFT

**NOTES**  
 ① Approximate location of Bridge Number Plate.

DESIGNED BY: Elmer Marx	CHECKED: Checker	LAYOUT BY: Elmer Marx	CHECKED BY: Checker
DRAWN BY: Sam Sallie	CHECKED: Elmer Marx	SPECIFICATIONS BY: Elmer Marx	P S & E COMPARED: Checker
QUANTITIES BY: Elmer Marx	CHECKED: Checker	APPROVAL RECOMMENDED BY:	Rich Pratt

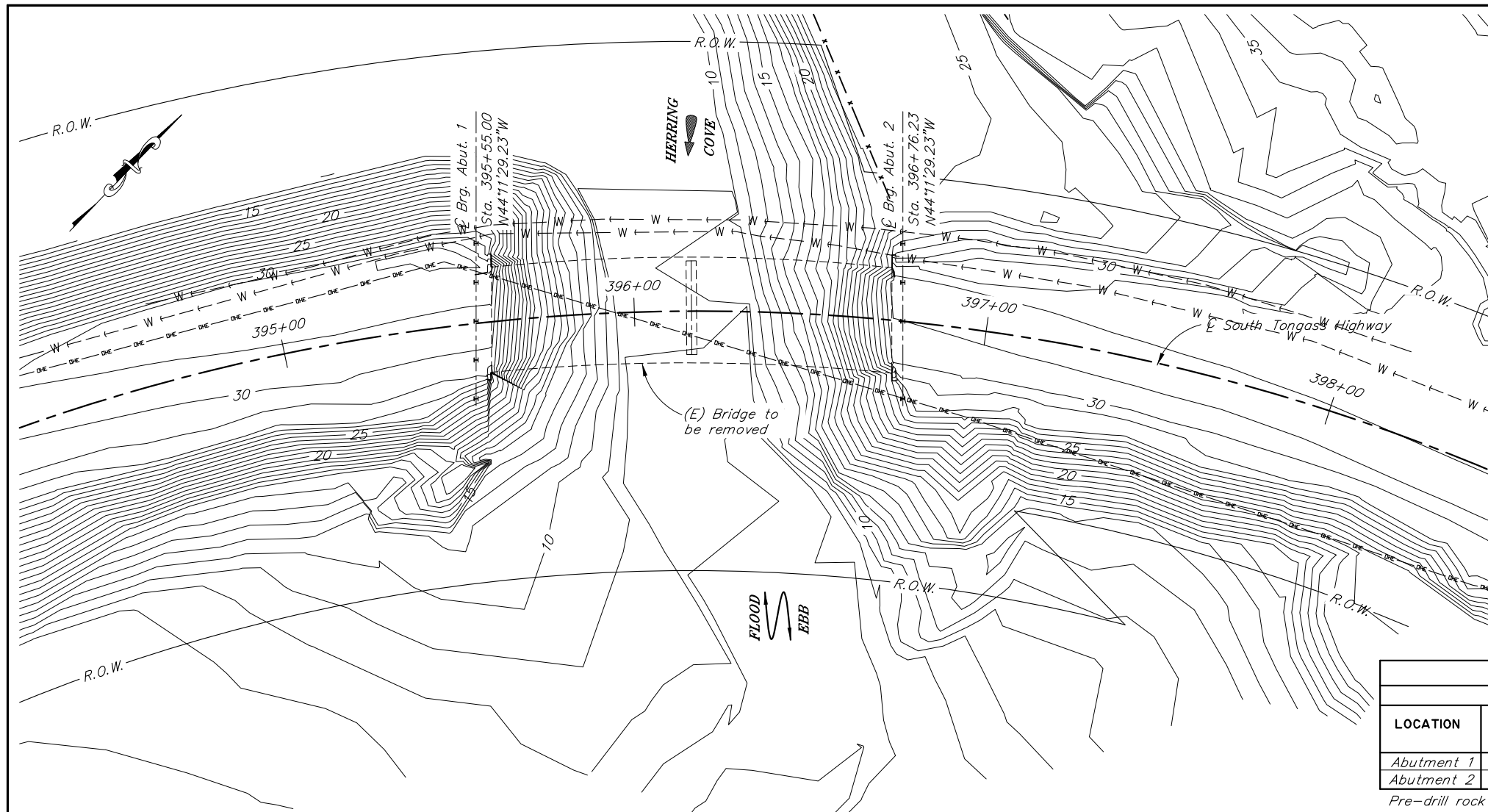
STATE OF ALASKA  
**DEPARTMENT OF TRANSPORTATION  
 AND PUBLIC FACILITIES**  
 BRIDGE SECTION  
 3132 Channel Drive  
 Juneau, Alaska 99801  
 907-465-2975

**HERRING COVE BRIDGE**  
 SOUTH TONGASS HIGHWAY  
**GENERAL LAYOUT**

  
 BRIDGE NO. 253  
 DWG. NO. 1

R:\cod\253\253-GENERAL LAYOUT Wed, Oct/03/18 01:27pm

STATE	PROJECT DESIGNATION	YEAR	SHEET NO.	TOTAL SHEETS
ALASKA	SFHwy00072/0902043	2019	N2	THShts



**GENERAL NOTES**

DESIGN:..... AASHTO LRFD Bridge Design Specifications, 2017 Edition, with latest interim specifications.  
 Seismic design per AASHTO Guide Specifications for LRFD Seismic Bridge Design, 2011 with latest interim revisions.

LIVE LOAD:..... HL-93

DEAD LOAD:..... Includes 50 psf for all wearing surfaces.

SEISMIC PARAMETERS:..... PGA = 0.09  
 S<sub>s</sub> = 0.18  
 S<sub>1</sub> = 0.14  
 Site Class = D  
 Liquefaction Potential = Moderate  
 AASHTO 7% probability of exceedance in 75 years.

REINFORCEMENT:..... ASTM A706, Grade 60, F<sub>y</sub> = 60,000 psi  
 ASTM A970 Headed bars, Class HA.  
 Space reinforcement evenly unless otherwise noted.

PRESTRESSED CONCRETE:..... See "GIRDERS" Dwg.

CONCRETE:..... Class A Concrete unless otherwise noted, f'<sub>c</sub> = 4000 psi

STRUCTURAL STEEL:..... ASTM A709, Grade 36T3, F<sub>y</sub> = 36,000 psi  
 Galvanize structural steel in accordance with AASHTO M111 unless shown otherwise.

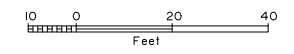
STRUCTURAL STEEL PILING:..... ASTM A709, GR50T3, F<sub>y</sub> = 50,000 psi.  
 Pile Tip reinforcing is required.  
 Embed piles into rock sockets

**PILE DATA TABLE**

LOCATION	PILE TYPE	DRIVING CRITERIA		DESIGN DATA		
		MINIMUM PENETRATION (ft)	ESTIMATED PILE TIP ELEVATION (ft)	DRIVING RESISTANCE (K)	STRENGTH FACTORED LOAD (K)	NOMINAL RESISTANCE (K)
Abutment 1	HP 14x117					0.65
Abutment 2	HP 14x117					0.65

Pre-drill rock socket to avoid waterline

**SITE PLAN**



**ESTIMATE OF QUANTITIES**

ITEM NO.	ITEM	PAY UNIT	ESTIMATING UNIT	SUBST.	SUPERST.	TOTAL QUANTITY
202.0023.0000	Removal of Existing Bridge No. 253	LS	LS			
205.0006.0000	Structural Fill	CY	CY			
501.0001.0000	Class A Concrete	LS	CY			
501.0007.0000	Precast Concrete Member (123'-0" Decked Bulb-Tee)	EA	EA			
503.0001.0000	Reinforcing Steel	LS	LBS			
503.0002.0000	Epoxy-Coated Reinforcing Steel	LS	LBS			
505.0005.0000	Furnish Structural Steel Piles (HP 14x117)	LF	LF			
505.0006.0000	Drive Structural Steel Piles (HP 14x117)	EA	EA			
507.0001.0000	Steel Bridge Railing	LF	LF			
507.0002.0000	Pedestrian Railing	LF	LF			
508.2000.0000	Waterproofing Membrane (Spray-on)	LS	SF			
520.0001.0000	Temporary Crossings	LS	LS			
606.0016.0000	Transition Rail	EA	EA			
611.0002.0001	Riprap, Class II	CY	CY			
631.0001.0000	Geotextile, Erosion Control, Class I	SY	SY			

Item numbers are for reference only. Quantities shown are not necessarily the pay quantities nor the total quantity of the particular item.



**ABBREVIATIONS:**

- ℄ = centerline
- ℄ = plate
- & = and
- @ = at
- ∅ = diameter
- ± = approximate
- AASHTO = American Association of State Highway and Transportation Officials
- ASTM = American Society for Testing and Materials
- Abut. = abutment
- Approx. = approximate
- b.f. = back/dirt face
- bot. = bottom
- Br. = bridge
- btwn. = between
- Brg. = bearings
- C.I.P. = cast in place
- C.G. = center of gravity
- CJP = complete joint penetration
- Clr. = clear, clearance
- CY = cubic yard
- dia. = diameter
- Dwg. = drawing
- E = expansion
- (E) = existing
- EA = each
- Elev. = elevation
- e.f. = each face
- e.w. = each way
- Ext. = exterior
- F = fixed
- f.f. = front/air face
- f'c = specified concrete compressive strength
- F<sub>y</sub> = yield stress
- Galv. = galvanize
- Hwy. = highway
- Int. = interior
- Jt. = joint
- ksf = 1000 pounds per square foot
- ksi = 1000 pounds per square inch
- LB = pound
- LF = linear foot
- LS = lump sum
- Lt. = left
- m = multiple presence factor - W
- max. = maximum
- min. = minimum
- N/A = not applicable
- n.f. = near face
- No. = number
- o.c. = on center
- O.H.W. = ordinary high water
- DHE — = overhead electrical cable
- pcf = pounds per cubic foot
- psf = pounds per square foot
- psi = pounds per square inch
- R.O.W. = right of way
- Rt. = right
- Rd. = road
- spc. = space, spaces
- Sta. = station
- Std. = standard
- SF = square feet
- Symm. = symmetric
- Typ. = typical
- UT = ultrasonic testing
- VPC = point of vertical curve
- VPI = point of vertical intersection
- VPT = point of vertical tangent
- W --- = underground waterline
- w/ = with

R:\cod\253\253-SITE PLAN Wed, Oct/03/18 01:27pm

DESIGNED BY: Elmer Marx	CHECKED: Checker	FOUNDATIONS REVIEWED BY: Engineer
DRAWN BY: Sam Sallie	CHECKED: Elmer Marx	
QUANTITIES BY: Elmer Marx	CHECKED: Checker	

**PRELIMINARY PLAN**

STATE OF ALASKA  
**DEPARTMENT OF TRANSPORTATION AND PUBLIC FACILITIES**  
 BRIDGE SECTION  
 3132 Channel Drive  
 Juneau, Alaska 99801  
 907-465-2975

**HERRING COVE BRIDGE**  
 SOUTH TONGASS HIGHWAY  
**SITE PLAN**



BRIDGE NO. 253  
 DWG. NO. 2

STATE	PROJECT DESIGNATION	YEAR	SHEET NO.	TOTAL SHEETS
ALASKA	SFHwy00072/0902043	2019	N3	TtShts

**DRAFT**

R:\cod\253\253-RIPRAP LAYOUT Wed, Oct/03/18 01:27pm

DESIGNED BY:	<i>Designer</i>	CHECKED:	<i>Checker</i>
DRAWN BY:	<i>Sam Sollie</i>	CHECKED:	<i>Designer</i>
QUANTITIES BY:	<i>Designer</i>	CHECKED:	<i>Checker</i>

**PRELIMINARY PLAN**

STATE OF ALASKA  
**DEPARTMENT OF TRANSPORTATION  
AND PUBLIC FACILITIES**  
BRIDGE SECTION  
3132 Channel Drive  
Juneau, Alaska 99801  
907-465-2975

**HERRING COVE BRIDGE**  
SOUTH TONGASS HIGHWAY  
**RIPRAP LAYOUT**



BRIDGE NO. 253  
DWG. NO. 3

STATE	PROJECT DESIGNATION	YEAR	SHEET NO.	TOTAL SHEETS
ALASKA	SFWY00072/0902043	2019	N4	TtShts

**DRAFT**

R:\cod\253\253-RIPRAP DETAILS Wed, Oct/03/18 01:27pm

DESIGNED BY:	<i>Designer</i>	CHECKED:	<i>Checker</i>
DRAWN BY:	<i>Sam Sallie</i>	CHECKED:	<i>Designer</i>
QUANTITIES BY:	<i>Designer</i>	CHECKED:	<i>Checker</i>

**PRELIMINARY PLAN**

STATE OF ALASKA  
**DEPARTMENT OF TRANSPORTATION  
AND PUBLIC FACILITIES**  
BRIDGE SECTION  
3132 Channel Drive  
Juneau, Alaska 99801  
907-465-2975

**HERRING COVE BRIDGE**  
SOUTH TONGASS HIGHWAY  
**RIPRAP DETAILS**

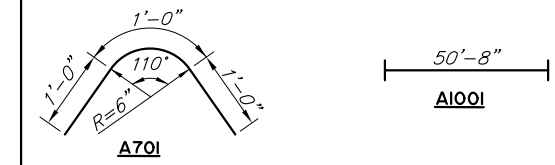


BRIDGE NO. 253  
DWG. NO. 4

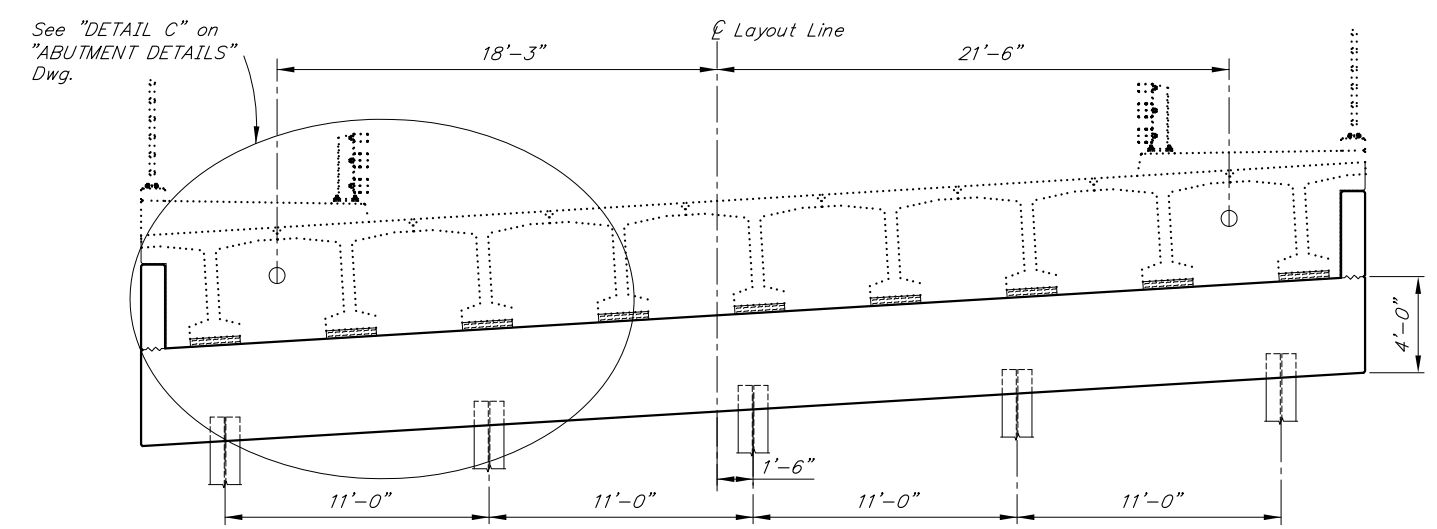
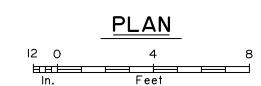
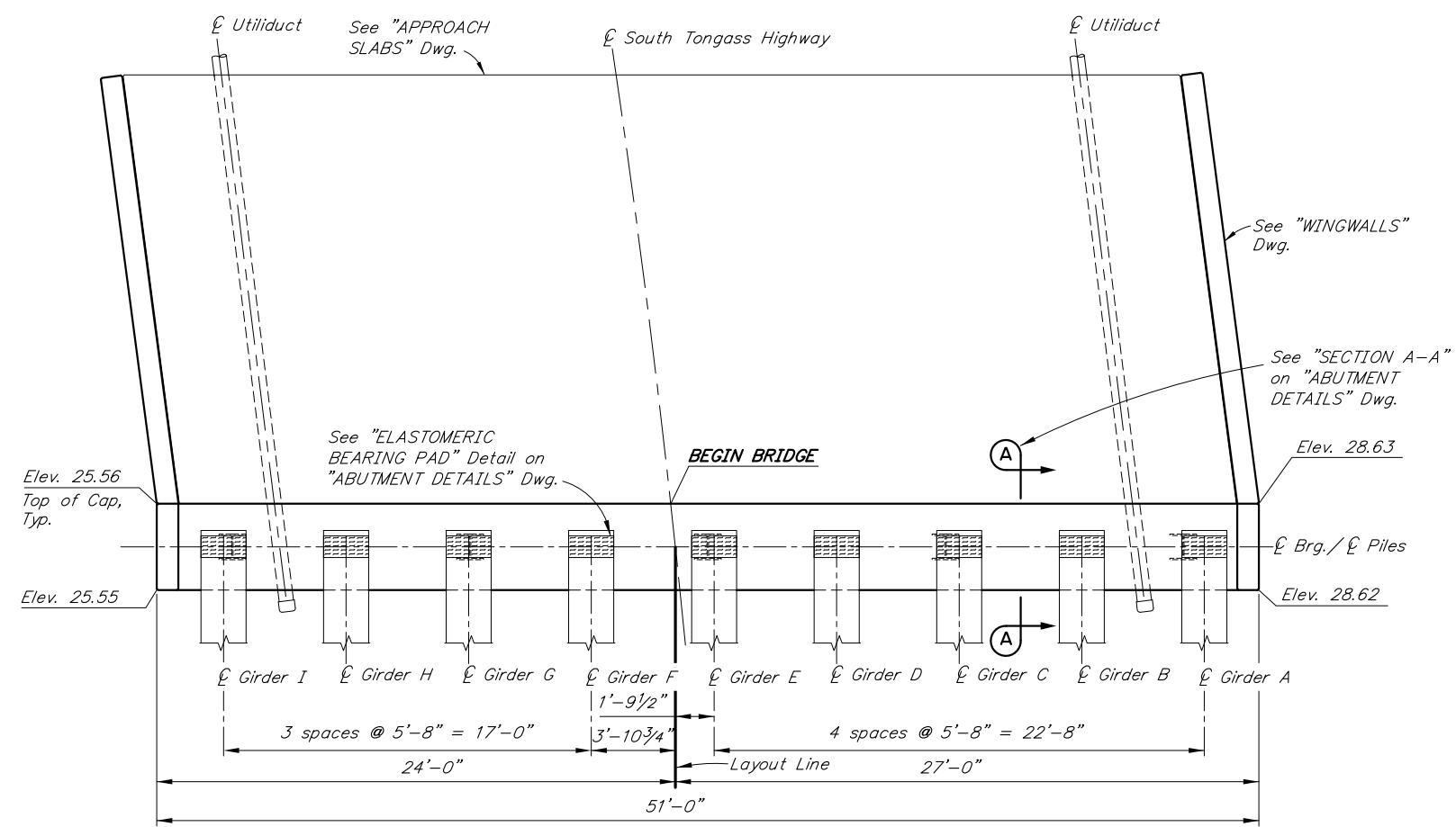
STATE	PROJECT DESIGNATION	YEAR	SHEET NO.	TOTAL SHEETS
ALASKA	SFWHY00072/0902043	2019	N5	TtShts

**REINFORCING STEEL - ABUTMENT I**

MARK	NOTE	SIZE	NO.	LENGTH	TYPE	BENDING DIAGRAM
A401		4	132	12'-3"	STIRRUP	
A402	E	4	40	7'-0"	---	
A501	E	5	50	15'-11"	STIRRUP	
A601		6	10	50'-8"	---	
A602	E	6	9	48'-6"	---	
A603	E	6	8	3'-3"	---	
A604	E	6	7	50'-8"	---	
A701	E	7	8	3'-0"	BENT	
A1001	H,M	10	14	50'-8"	---	



E - Epoxy-Coated  
H - Headed Reinforcing Steel  
M - Match cross slope



**DRAFT**

R:\cod\253\253-1-ABUT 1 Wed, Oct/03/18 01:29pm

DESIGNED BY:	Elmer Marx	CHECKED:	Checker
DRAWN BY:	Sam Sollie	CHECKED:	Elmer Marx
QUANTITIES BY:	Elmer Marx	CHECKED:	Checker

STATE OF ALASKA  
DEPARTMENT OF TRANSPORTATION  
AND PUBLIC FACILITIES  
BRIDGE SECTION  
3132 Channel Drive  
Juneau, Alaska 99801  
907-465-2975

**HERRING COVE BRIDGE**  
SOUTH TONGASS HIGHWAY  
**ABUTMENT 1**



BRIDGE NO. 253  
DWG. NO. 5

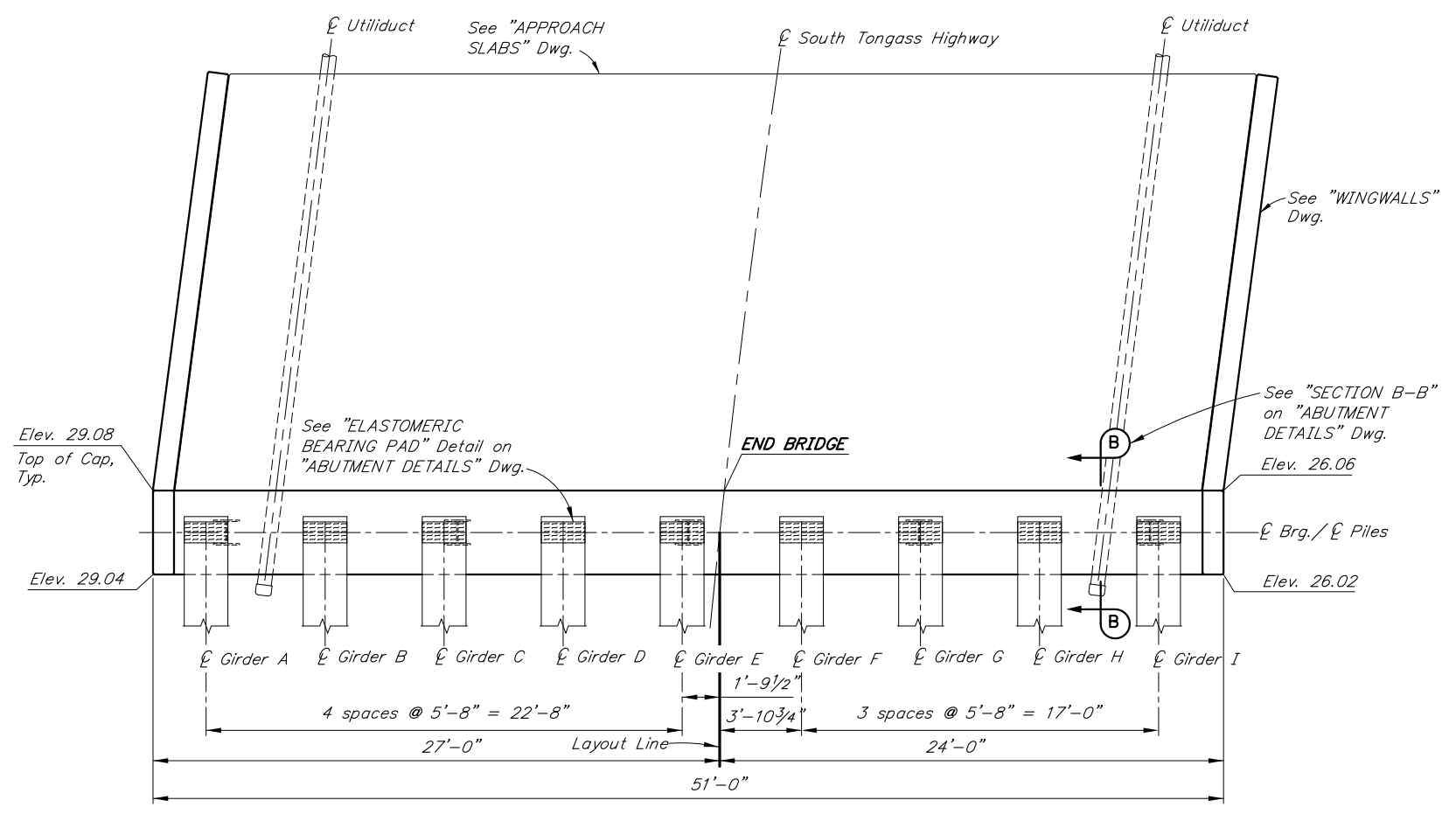
STATE	PROJECT DESIGNATION	YEAR	SHEET NO.	TOTAL SHEETS
ALASKA	SFWY00072/0902043	2019	N6	TtShts

**REINFORCING STEEL - ABUTMENT 2**

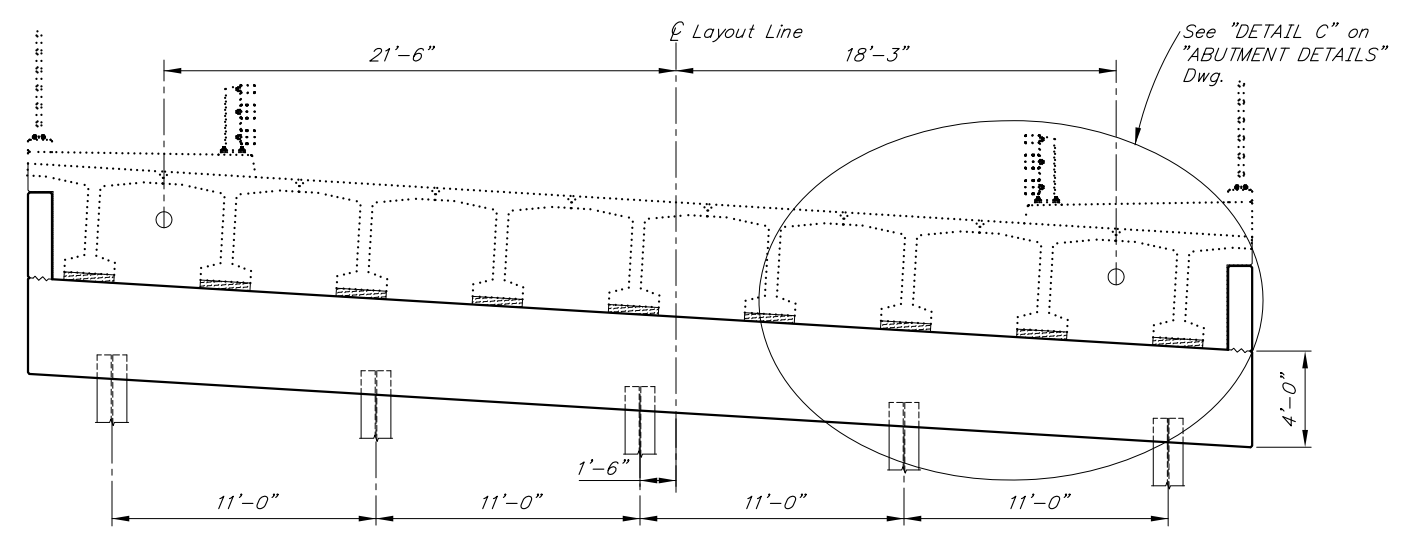
MARK	NOTE	SIZE	NO.	LENGTH	TYPE	BENDING DIAGRAM
A401		4	132	12'-3"	STIRRUP	
A501	E	5	50	15'-11"	STIRRUP	
A601		6	10	50'-8"	---	
A602	E	6	9	48'-6"	---	
A603	E	6	8	3'-3"	---	
A604	E	6	7	50'-8"	---	
A701	E	7	8	3'-0"	BENT	
A1001	H,M	10	14	50'-8"	---	



E - Epoxy-Coated  
H - Headed Reinforcing Steel  
M - Match cross slope



**PLAN**



**ELEVATION**



**DRAFT**

R:\cod\253\253-1-ABUT 2 Wed, Oct/03/18 01:29pm

DESIGNED BY:	Elmer Marx	CHECKED:	Checker
DRAWN BY:	Sam Sallie	CHECKED:	Elmer Marx
QUANTITIES BY:	Elmer Marx	CHECKED:	Checker

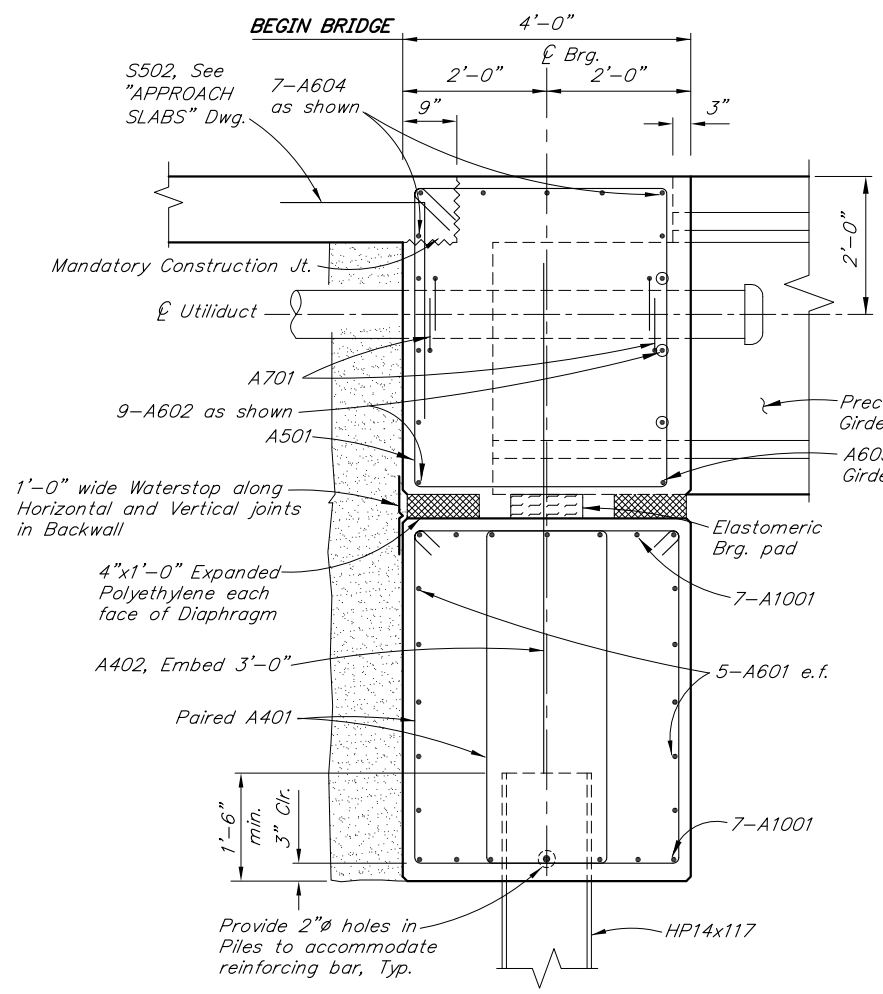
STATE OF ALASKA  
**DEPARTMENT OF TRANSPORTATION  
AND PUBLIC FACILITIES**  
BRIDGE SECTION  
3132 Channel Drive  
Juneau, Alaska 99801  
907-465-2975

**HERRING COVE BRIDGE**  
SOUTH TONGASS HIGHWAY  
**ABUTMENT 2**

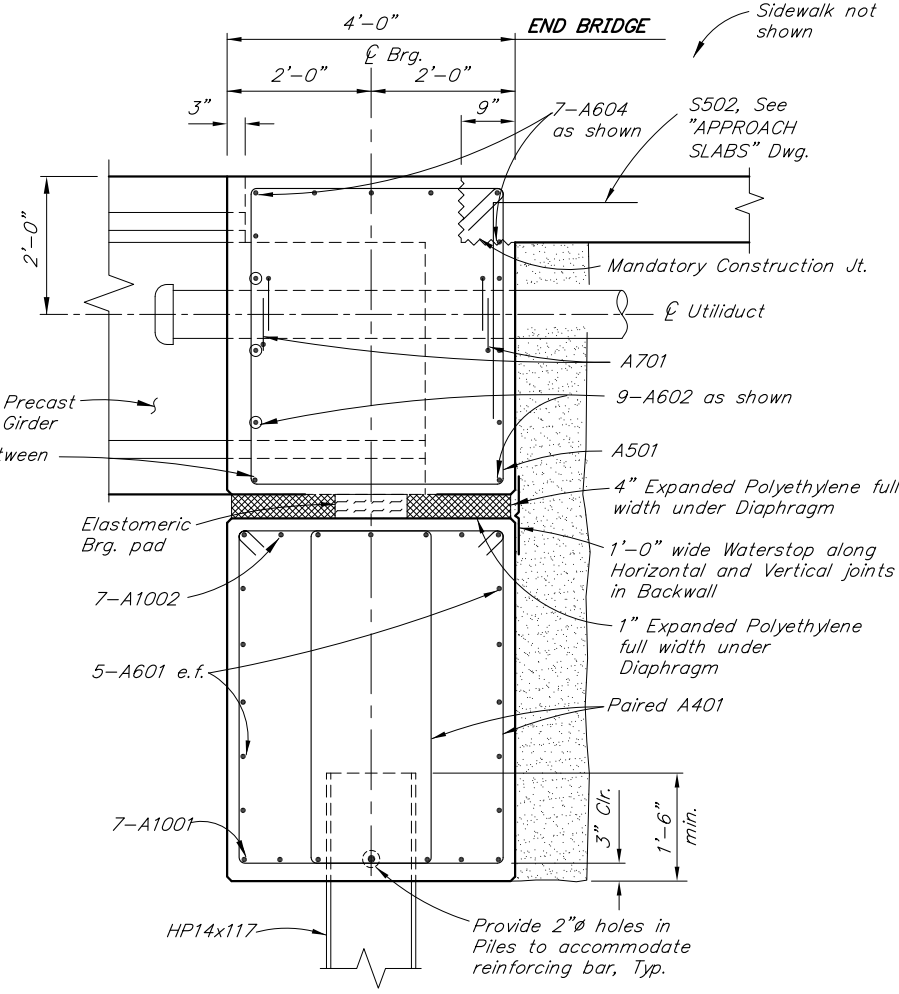


BRIDGE NO. 253  
DWG. NO. 6

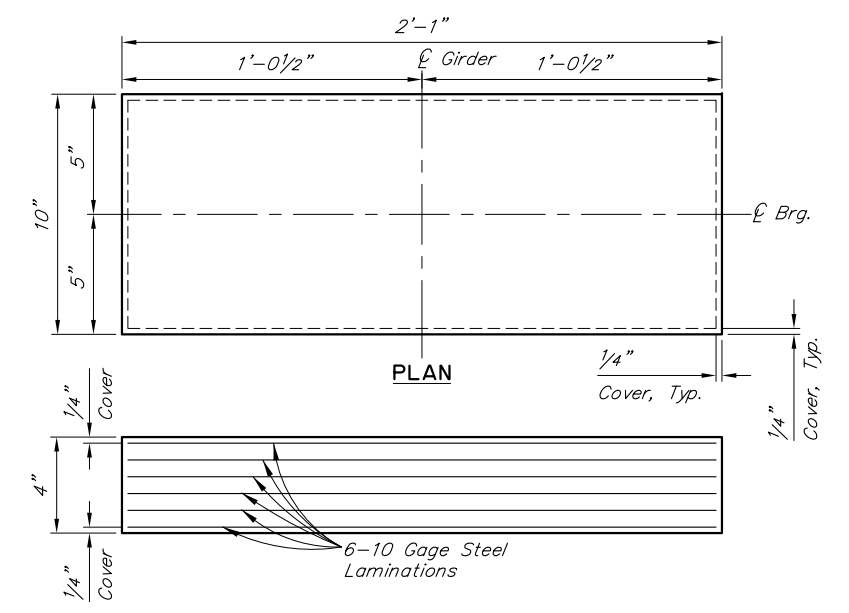
STATE	PROJECT DESIGNATION	YEAR	SHEET NO.	TOTAL SHEETS
ALASKA	SFHwy00072/0902043	2019	N7	TtShts



**SECTION A-A**  
 12 6 0 1 2 3  
 In. Feet

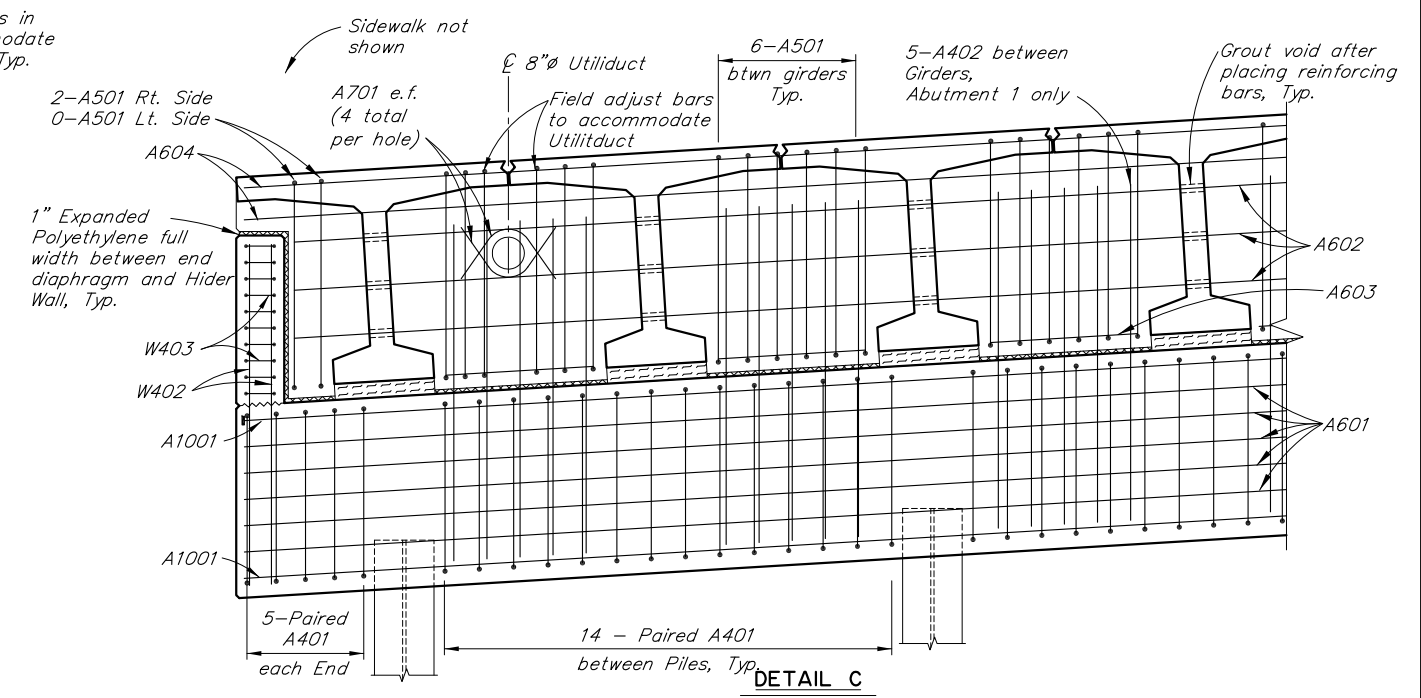


**SECTION B-B**  
 12 6 0 1 2 3  
 In. Feet



**ELEVATION  
 ELASTOMERIC BEARING PAD**

Grade 5  
 Shear Modulus = 0.115 ksi  
 Dead Load = 104 k Live  
 Load = 73 k



**DETAIL C**  
 12 6 0 1 2 3 4  
 In. Feet

**DRAFT**

R:\cod\253\253-1-ABUT DET Wed, Oct/03/18 01:28pm

DESIGNED BY:	Elmer Marx	CHECKED:	Checker
DRAWN BY:	Sam Sallie	CHECKED:	Elmer Marx
QUANTITIES BY:	Elmer Marx	CHECKED:	Checker

STATE OF ALASKA  
 DEPARTMENT OF TRANSPORTATION  
 AND PUBLIC FACILITIES  
 BRIDGE SECTION  
 3132 Channel Drive  
 Juneau, Alaska 99801  
 907-465-2975

**HERRING COVE BRIDGE**  
 SOUTH TONGASS HIGHWAY  
**ABUTMENT DETAILS**

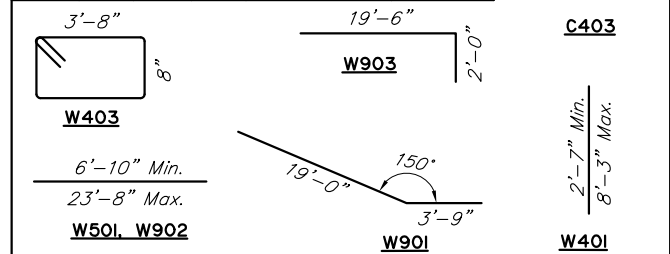


BRIDGE NO. 253  
 DWG. NO. 7

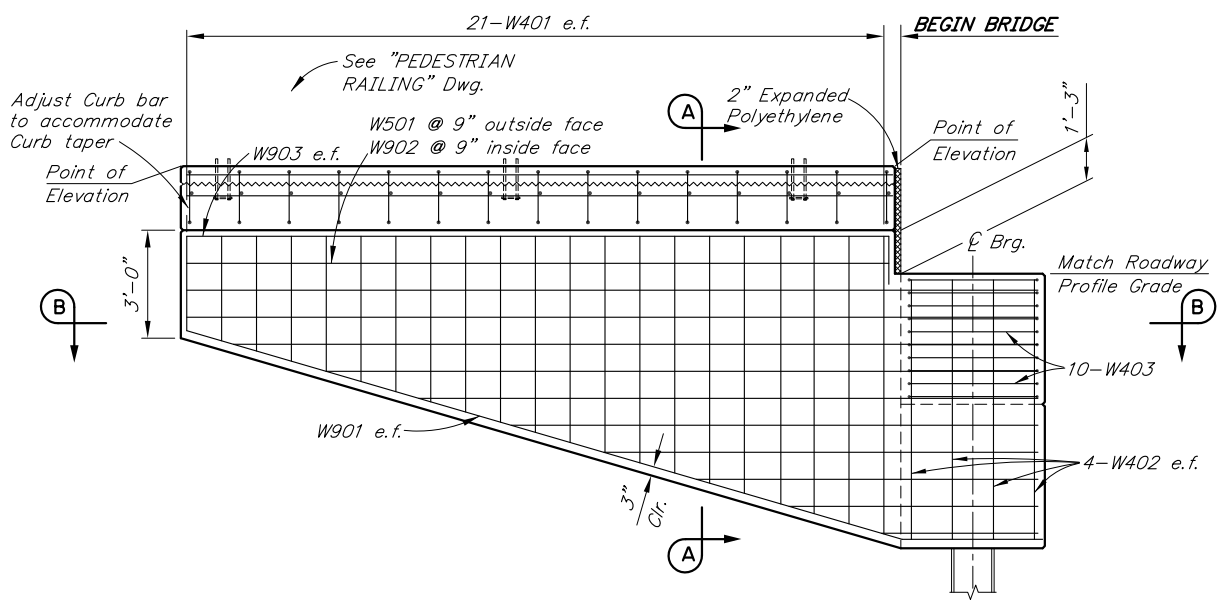
STATE	PROJECT DESIGNATION	YEAR	SHEET NO.	TOTAL SHEETS
ALASKA	SFWY00072/0902043	2019	N8	TtShts

**REINFORCING STEEL - ONE ABUTMENT**

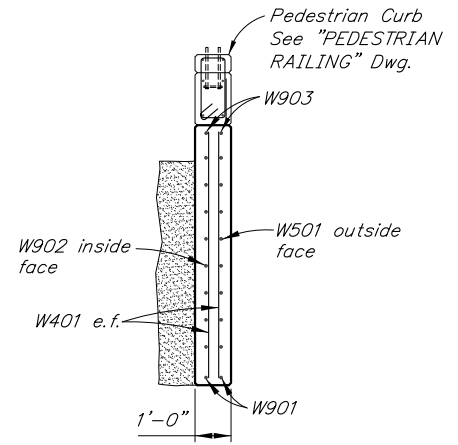
MARK	NOTE	SIZE	NO.	LENGTH	TYPE	BENDING DIAGRAM
W401		4	84	VARIABLES	---	
W402		4	16	7'-3"	---	
W403		4	20	9'-5"	STIRRUP	
W501	M	5	22	VARIABLES	---	
W901	M	9	4	24'-5"	BENT	
W902	M	9	22	VARIABLES	---	
W903		9	4	21'-6"	BENT	
C402	E,U	4	15	5'-3"	STIRRUP	
C402	D,E	4	15	3'-3"	STIRRUP	
C502	E	5	4	19'-6"	---	
C403						



D - Downstream sidewalk  
E - Epoxy-Coated  
M - Field adjust bar to match Angle  
U - Upstream sidewalk



**ELEVATION**



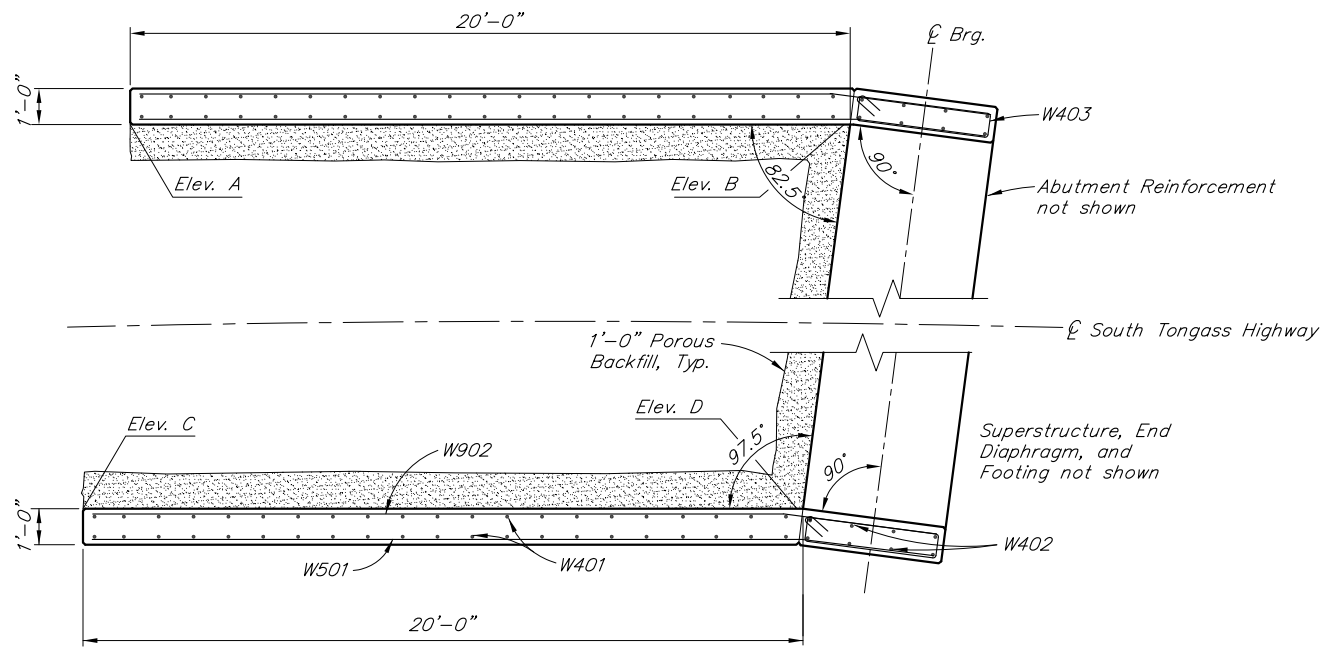
**SECTION A-A**



**DRAFT**

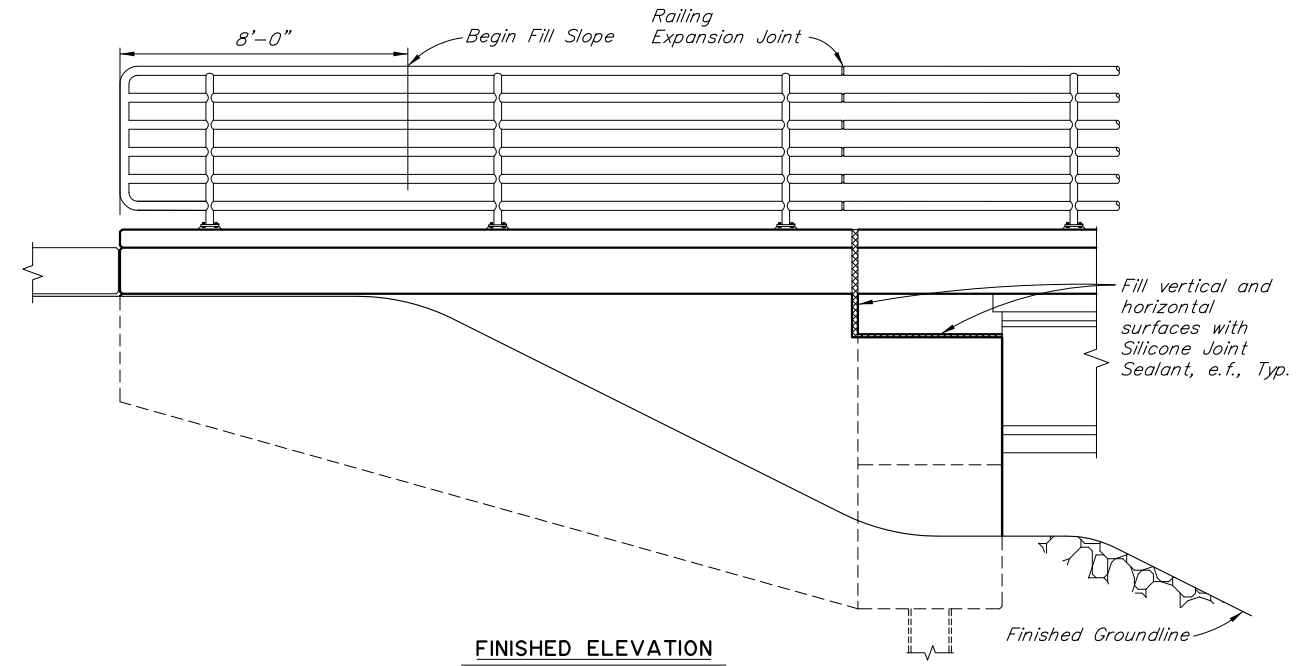
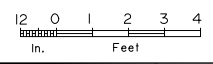
**TOP OF WINGWALL ELEVATION TABLE (FT)**

LOCATION	A UPSTREAM	B UPSTREAM	C DOWNSTREAM	D DOWNSTREAM
ABUTMENT 1	34.22	34.30	32.08	32.16
ABUTMENT 2	34.82	34.76	32.74	32.66



**SECTION B-B**

(Abut. 1 shown, Abut. 2 similar)



**FINISHED ELEVATION**



R:\cod\253\253-1-WINGWALLS Med. Oct/03/18 01:28pm

DESIGNED BY:	Elmer Marx	CHECKED:	Checker
DRAWN BY:	Sam Sollie	CHECKED:	Elmer Marx
QUANTITIES BY:	Elmer Marx	CHECKED:	Checker

STATE OF ALASKA  
DEPARTMENT OF TRANSPORTATION  
AND PUBLIC FACILITIES  
BRIDGE SECTION  
3132 Channel Drive  
Juneau, Alaska 99801  
907-465-2975

**HERRING COVE BRIDGE**  
SOUTH TONGASS HIGHWAY  
**WINGWALLS**

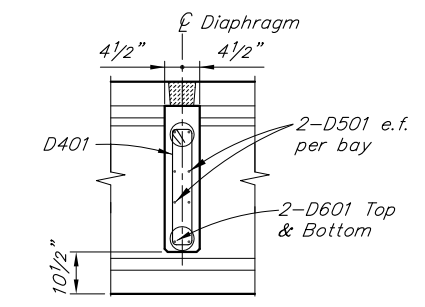
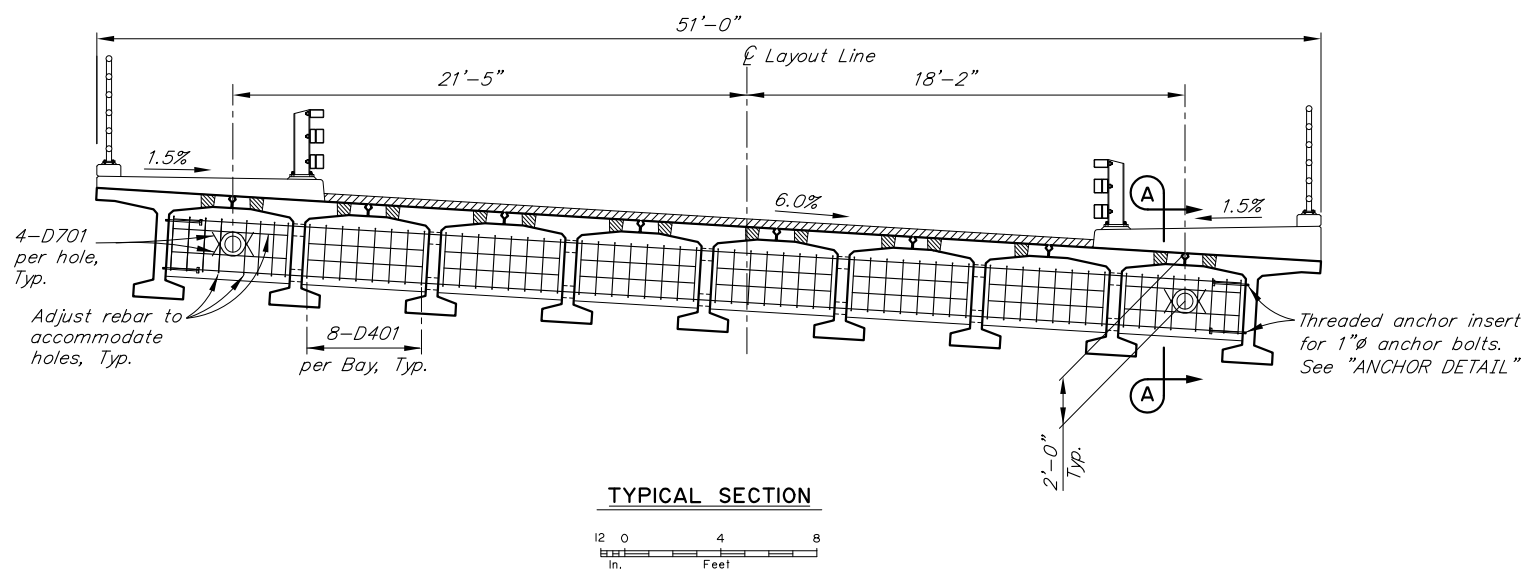


BRIDGE NO. 253  
DWG. NO. 8

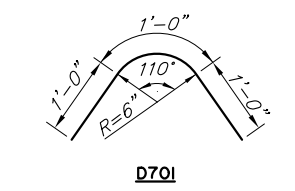


**REINFORCING STEEL - ONE DIAPHRAGM**

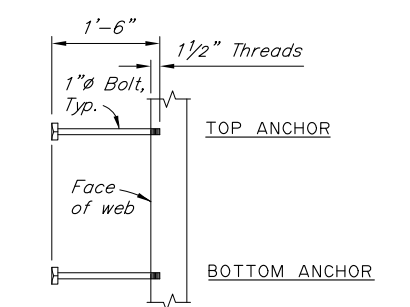
MARK	NOTE	SIZE	NO.	LENGTH	TYPE	BENDING DIAGRAM
D401	E	4	64	6'-1"	STIRRUP	
D501	E	5	32	4'-9"	---	
D601	E,S	6	4	44'-7"	---	
D701	E	7	8	3'-0"	BENT	



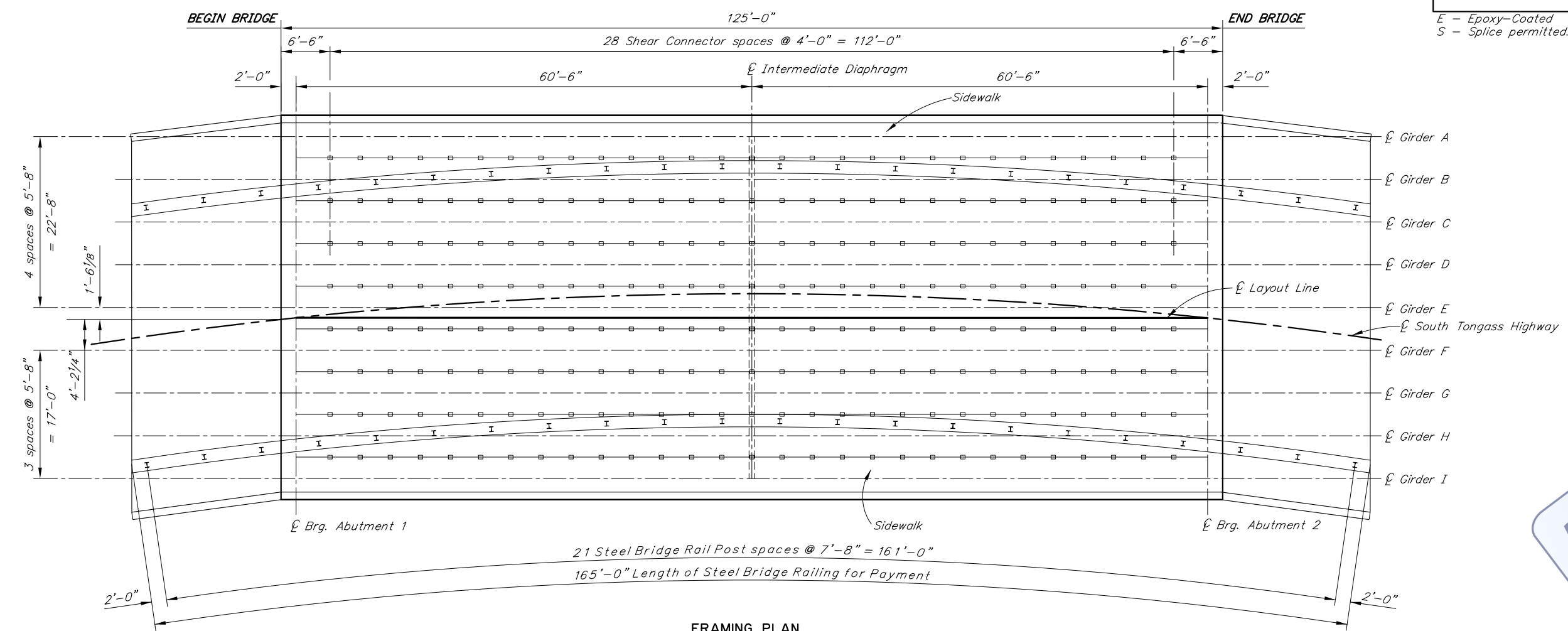
**SECTION A-A**  
 12 6 0 1 2 3 4  
 In. Feet



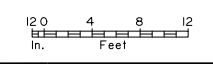
E - Epoxy-Coated  
 S - Splice permitted. Length does not include splices



ASTM A307 GALVANIZED  
**ANCHOR DETAIL**  
 No Scale



**FRAMING PLAN**



**DRAFT**

R:\cod\253\253-1-FRAMING PLAN Wed, Oct/03/18 01:28pm

DESIGNED BY:	Elmer Marx	CHECKED:	Checker
DRAWN BY:	Sam Sollie	CHECKED:	Elmer Marx
QUANTITIES BY:	Elmer Marx	CHECKED:	Checker

STATE OF ALASKA  
**DEPARTMENT OF TRANSPORTATION  
 AND PUBLIC FACILITIES**  
 BRIDGE SECTION  
 3132 Channel Drive  
 Juneau, Alaska 99801  
 907-465-2975

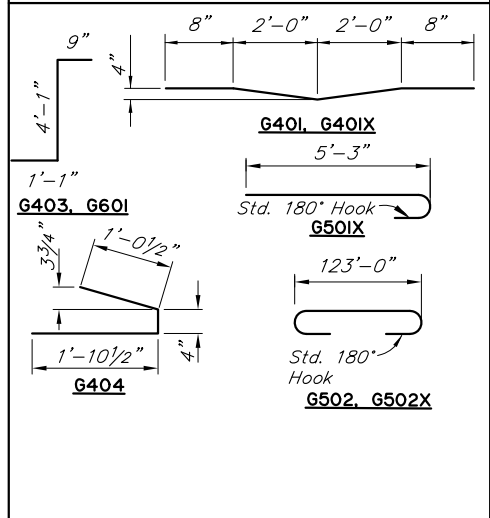
**HERRING COVE BRIDGE**  
 SOUTH TONGASS HIGHWAY  
**FRAMING PLAN AND TYPICAL SECTION**

STATE	PROJECT DESIGNATION	YEAR	SHEET NO.	TOTAL SHEETS
ALASKA	SFHwy00072/0902043	2019	N10	TtShts

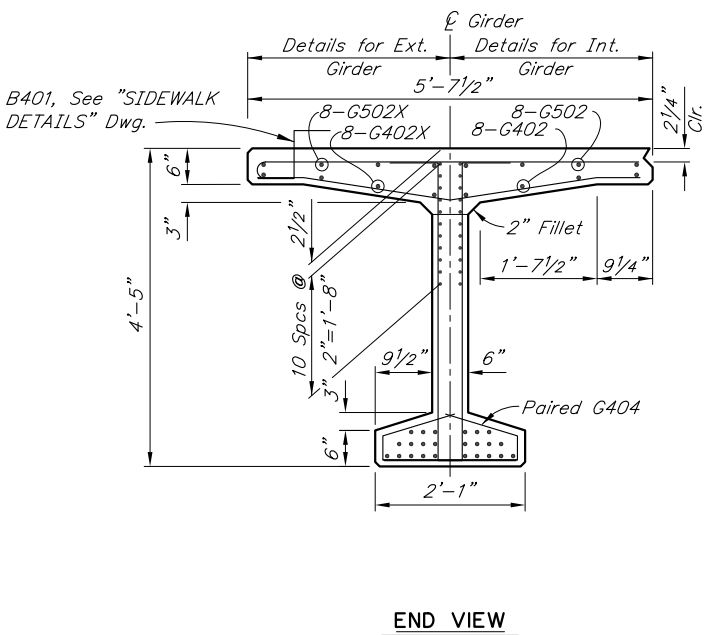
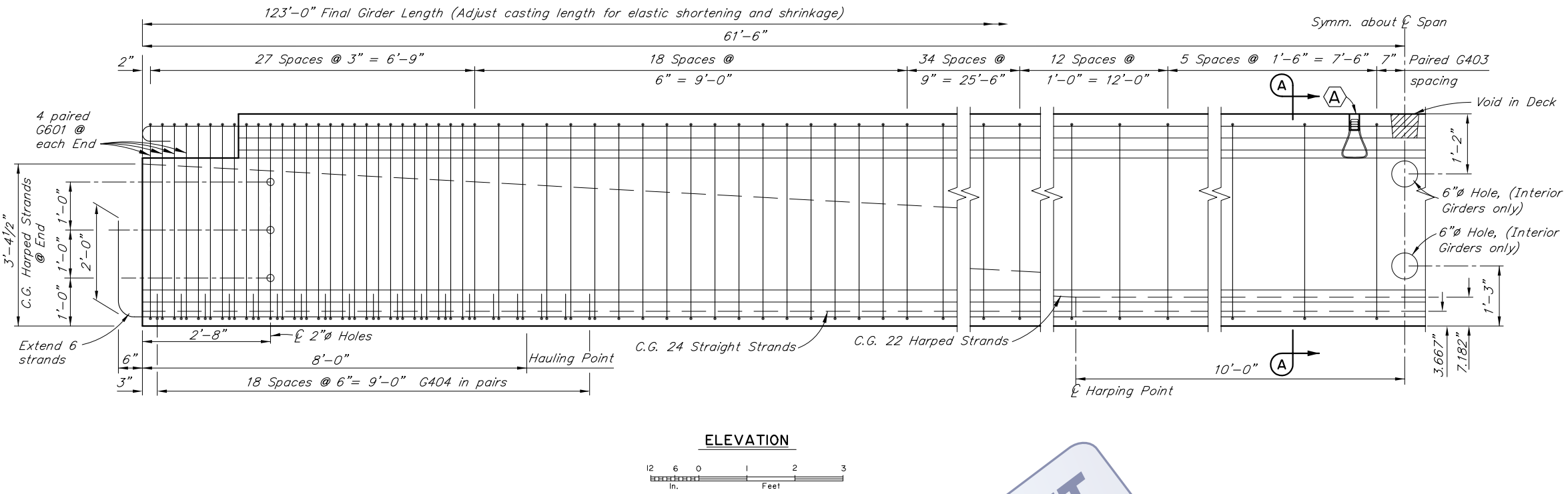
**REINFORCING STEEL-ONE GIRDER**

MARK	NOTE	SIZE	NO.	LENGTH	TYPE
G401	E	4	177	5'-5"	BENT
G401X	E	4	202	5'-5"	BENT
G402	E,S	4	8	117'-2"	---
G402X	E,S	4	8	117'-2"	---
G403	E	4	372	5'-11"	BENT
G404	E	4	77	3'-3"	BENT
G501	E	5	177	5'-2"	---
G501X	E,S	5	202	5'-10"	BENT
G502	E,S	5	8	124'-2"	BENT
G502X	E,S	5	8	124'-2"	BENT
G601	E	6	16	5'-11"	BENT

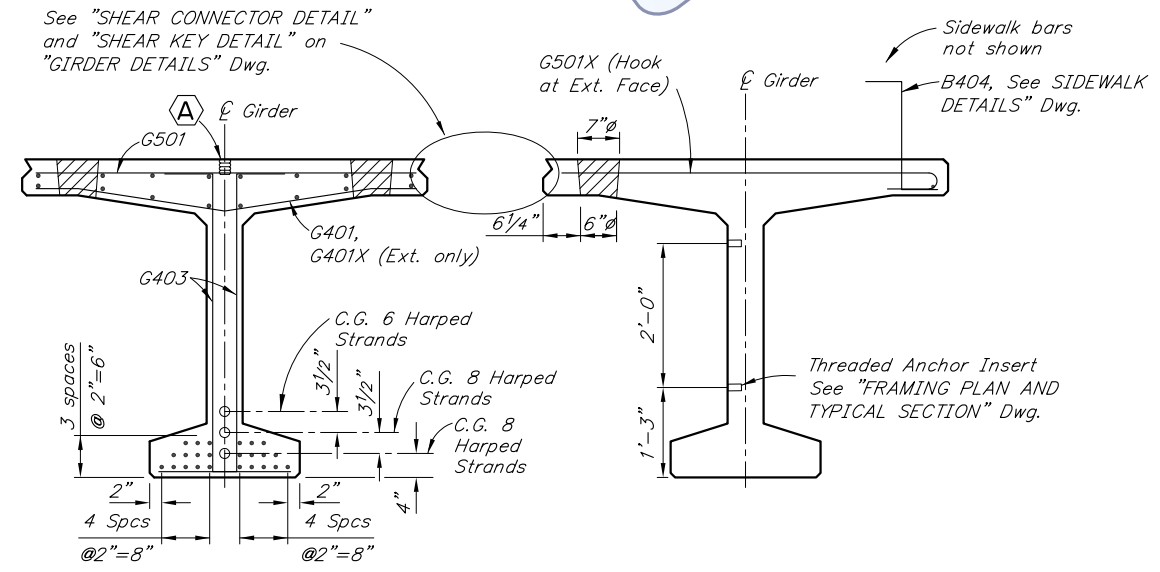
**BENDING DIAGRAM**



E - Epoxy-Coated  
 S - Length does not include splices  
 X - Exterior Girders only



**END VIEW**



**SECTION A-A**

**EXTERIOR GIRDER NEAR MID SPAN**  
 (Unrelated Reinforcement not shown)

**GIRDER NOTES:**

- Class P Concrete: at Stress Transfer..... $f'_{ci} = 7,000$  psi  
 at 28 Days..... $f'_c = 8,500$  psi
- 0.6"  $\phi$  low-relaxation prestressing strands with an ultimate strength of 270 ksi and a cross sectional area of 0.217 in<sup>2</sup>.
- Steel stresses: Pretensioning - Jacking Stress 189 ksi  
 After initial losses 167 ksi  
 After all losses 138 ksi
- One inch clear cover on reinforcing steel unless otherwise noted.
- See "FRAMING PLAN AND TYPICAL SECTION" Dwg. for Shear Connector spacing.
- Deflect forms to compensate for camber.
- Galvanize structural steel embedded in girders except for shear connectors.
- 1"X1'-0" Coil Anchor Insert for vertical adjustment of girders. Recess 2". Prevent concrete from filling hole.
- Omit Shear Key, Shear Key Connector and Deck Void in exterior face of exterior girders.
- Cast ends of girders plumb with respect to roadway grade. Install web holes and web anchor inserts parallel to  $\bar{C}$  bearing.
- Finish top flange with light broom finish. Roughen the surface under the Sidewalks.

R:\cod\253\253-1-GIRDERS Wed, Oct/03/18 01:28pm

DESIGNED BY:	Elmer Marx	CHECKED:	Checker
DRAWN BY:	Sam Sallie	CHECKED:	Elmer Marx
QUANTITIES BY:	Elmer Marx	CHECKED:	Checker

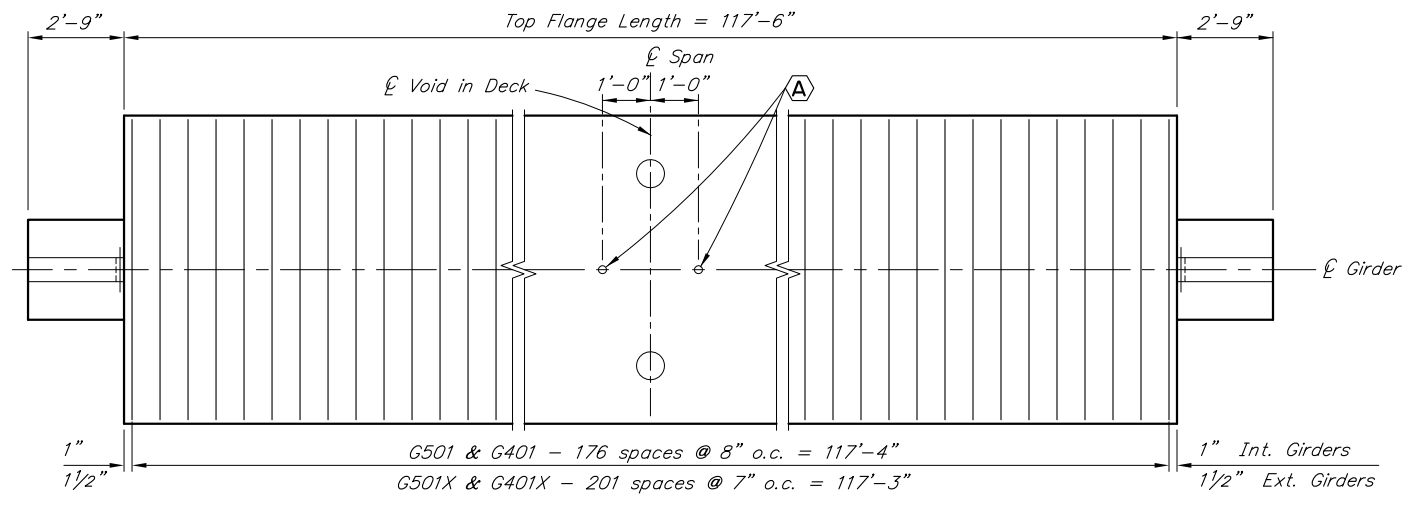
STATE OF ALASKA  
**DEPARTMENT OF TRANSPORTATION  
 AND PUBLIC FACILITIES**  
 BRIDGE SECTION  
 3132 Channel Drive  
 Juneau, Alaska 99801  
 907-465-2975

**HERRING COVE BRIDGE**  
 SOUTH TONGASS HIGHWAY  
**GIRDERS**



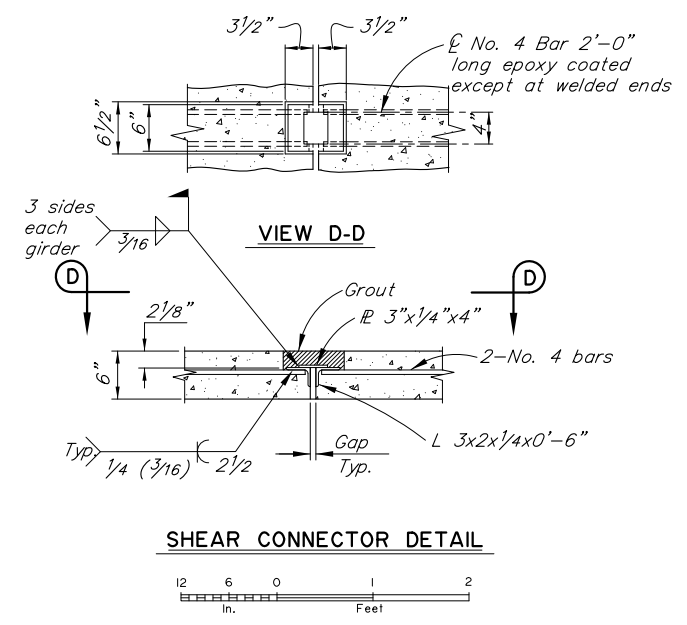
BRIDGE NO. 253  
 DWG. NO. 10

STATE	PROJECT DESIGNATION	YEAR	SHEET NO.	TOTAL SHEETS
ALASKA	SFHwy00072/0902043	2019	N11	TtShts

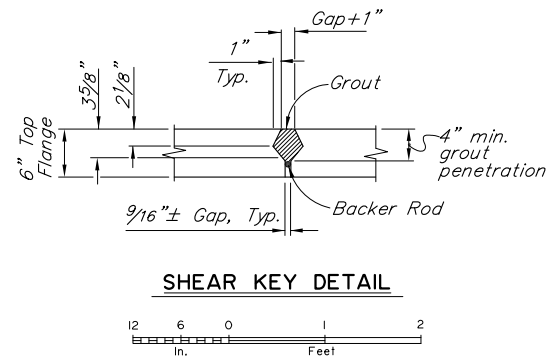


**PLAN**  
No Scale

**DRAFT**



**SHEAR CONNECTOR DETAIL**



**SHEAR KEY DETAIL**

R:\cod\253\253-1-GIRDER DETAILS Wed, Oct/03/18 01:28pm

DESIGNED BY:	<i>Elmer Marx</i>	CHECKED:	<i>Checker</i>
DRAWN BY:	<i>Sam Sollie</i>	CHECKED:	<i>Elmer Marx</i>
QUANTITIES BY:	<i>Elmer Marx</i>	CHECKED:	<i>Checker</i>

STATE OF ALASKA  
**DEPARTMENT OF TRANSPORTATION  
AND PUBLIC FACILITIES**  
BRIDGE SECTION  
3132 Channel Drive  
Juneau, Alaska 99801  
907-465-2975

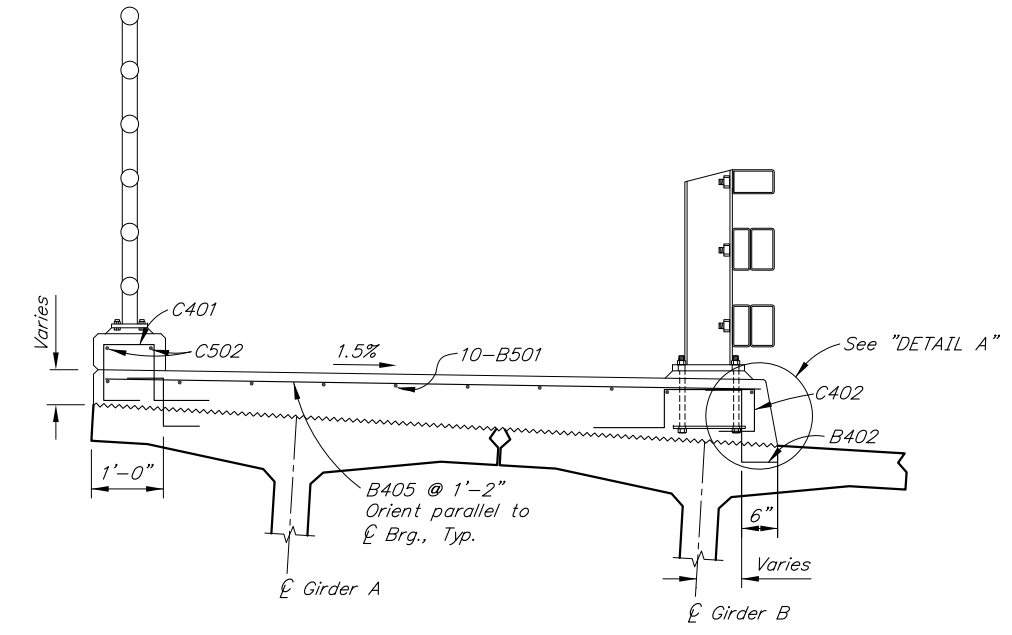
**HERRING COVE BRIDGE**  
SOUTH TONGASS HIGHWAY  
**GIRDER DETAILS**



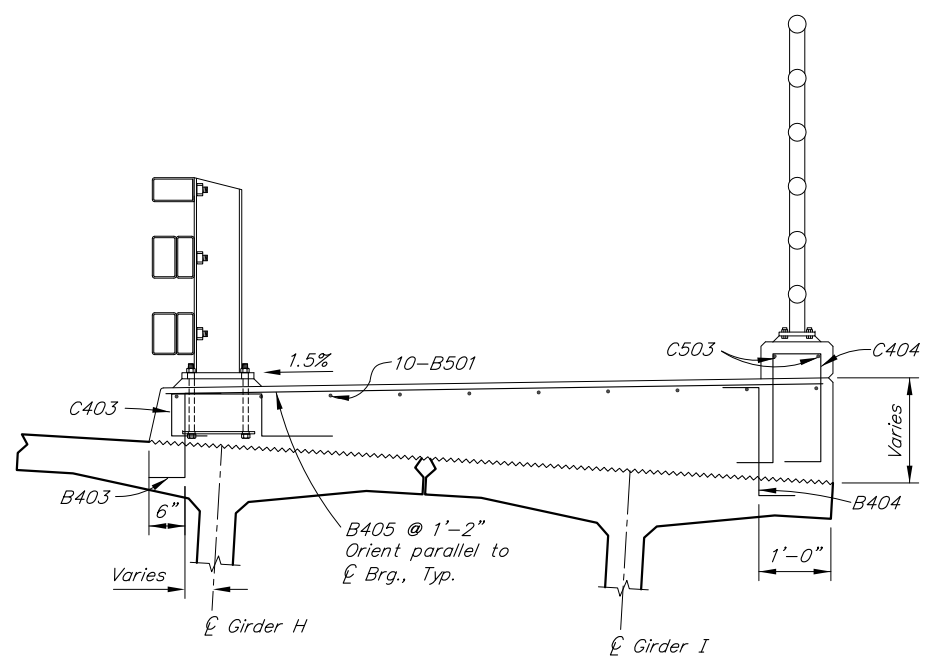
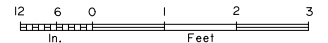
BRIDGE NO. 253  
DWG. NO. 11

STATE	PROJECT DESIGNATION	YEAR	SHEET NO.	TOTAL SHEETS
ALASKA	SFHwy00072/0902043	2019	N12	TtShts

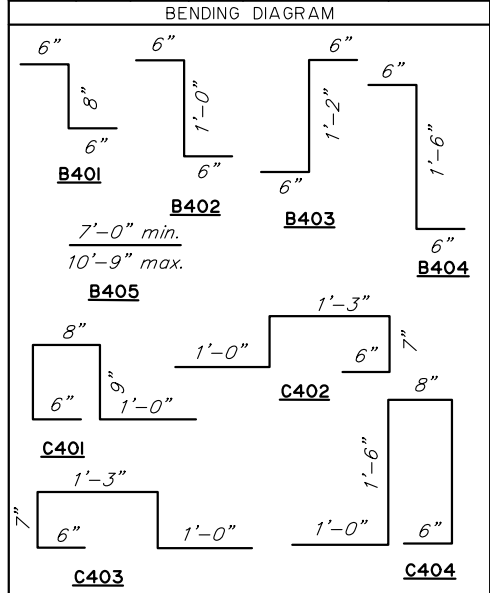
REINFORCING STEEL					
MARK	NOTE	SIZE	NO.	LENGTH	TYPE
B401	E	4	142	1'-8"	BENT
B402	E	4	142	2'-0"	BENT
B403	E	4	142	2'-2"	BENT
B404	E	4	142	2'-6"	BENT
B405	E	4	284	VARIES	---
B501	E	5	20	164'-8"	---
C401	E	4	111	3'-8"	BENT
C402	E	4	111	3'-11"	BENT
C403	E	4	111	3'-4"	BENT
C404	E	4	111	5'-2"	BENT
C502	E	5	4	164'-8"	---



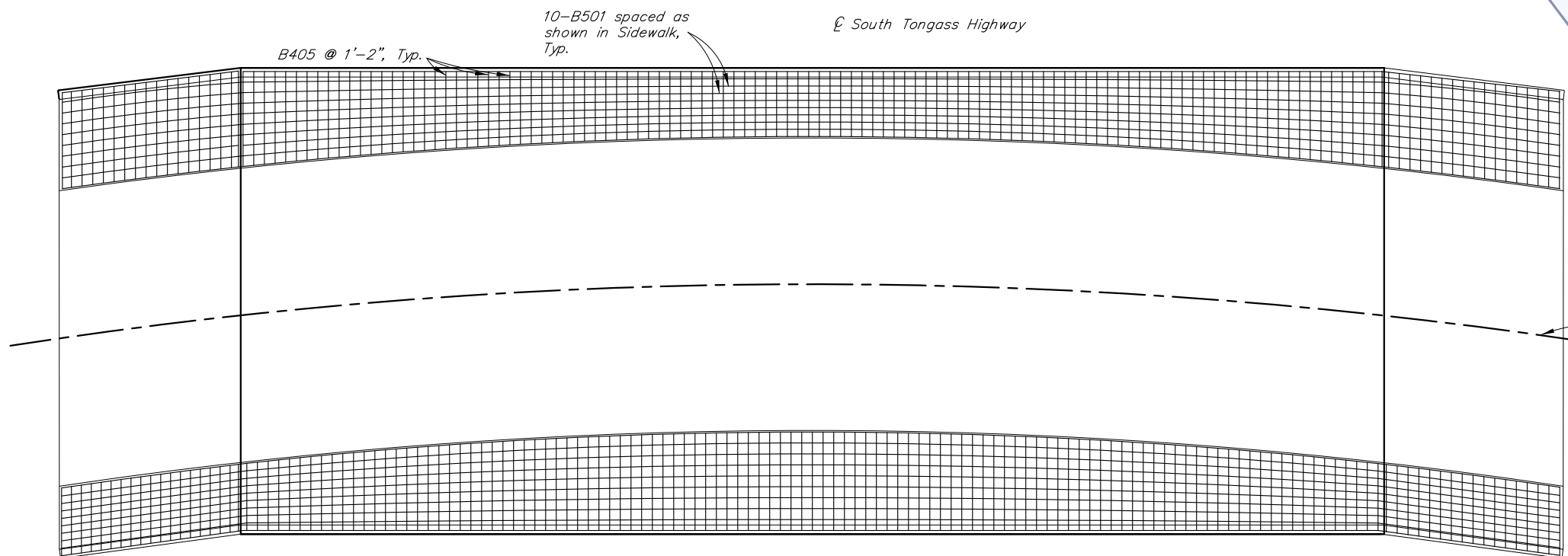
UPSTREAM/ LEFT SIDEWALK SECTION



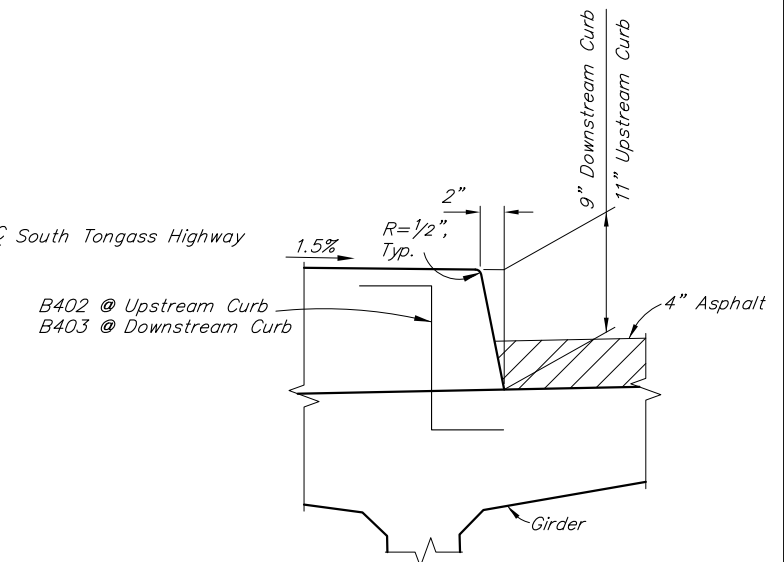
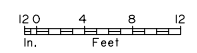
DOWNSTREAM/ RIGHT SIDEWALK SECTION



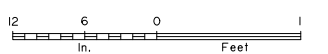
**DRAFT**



SIDEWALK PLAN



DETAIL A



R:\cod\253\253-1-SIDEWALK Wed, Oct/03/18 01:28pm

DESIGNED BY:	Elmer Marx	CHECKED:	Checker
DRAWN BY:	Sam Sallie	CHECKED:	Elmer Marx
QUANTITIES BY:	Elmer Marx	CHECKED:	Checker

STATE OF ALASKA  
**DEPARTMENT OF TRANSPORTATION  
AND PUBLIC FACILITIES**  
BRIDGE SECTION  
3132 Channel Drive  
Juneau, Alaska 99801  
907-465-2975

**HERRING COVE BRIDGE**  
SOUTH TONGASS HIGHWAY  
**SIDEWALK DETAILS**

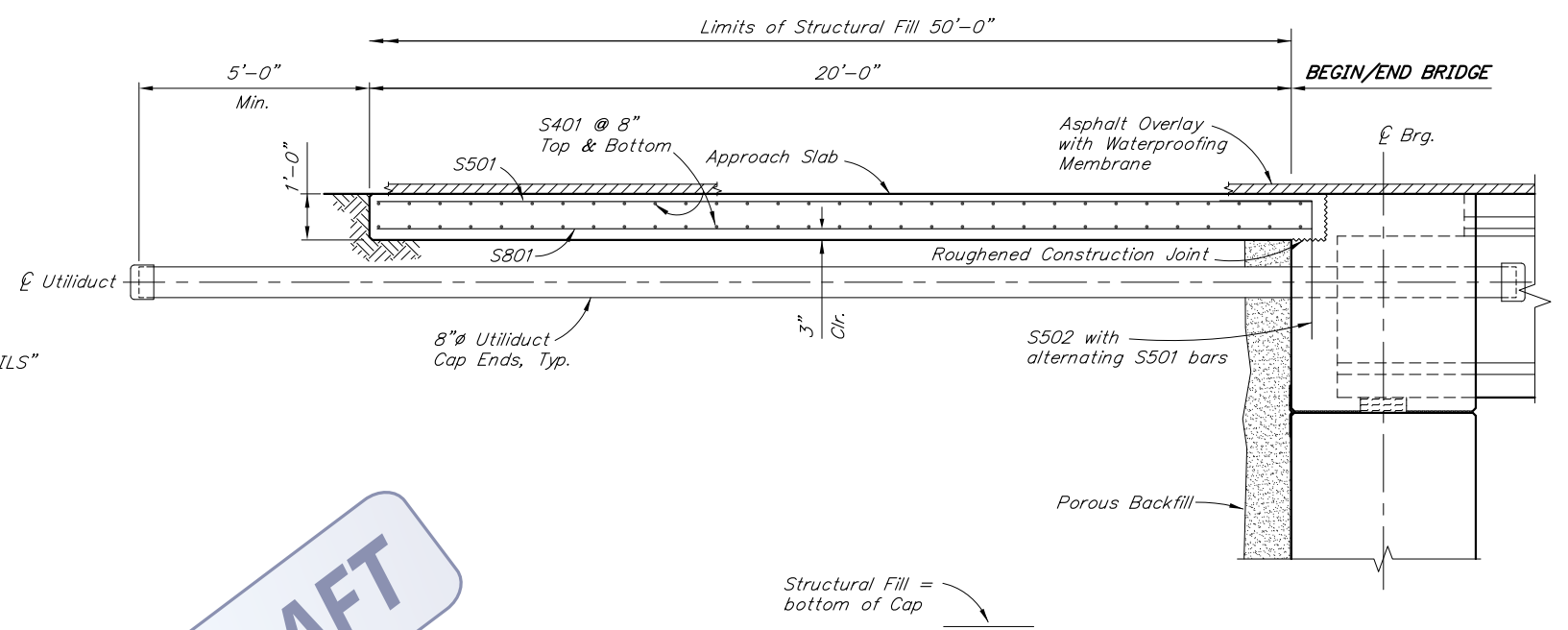
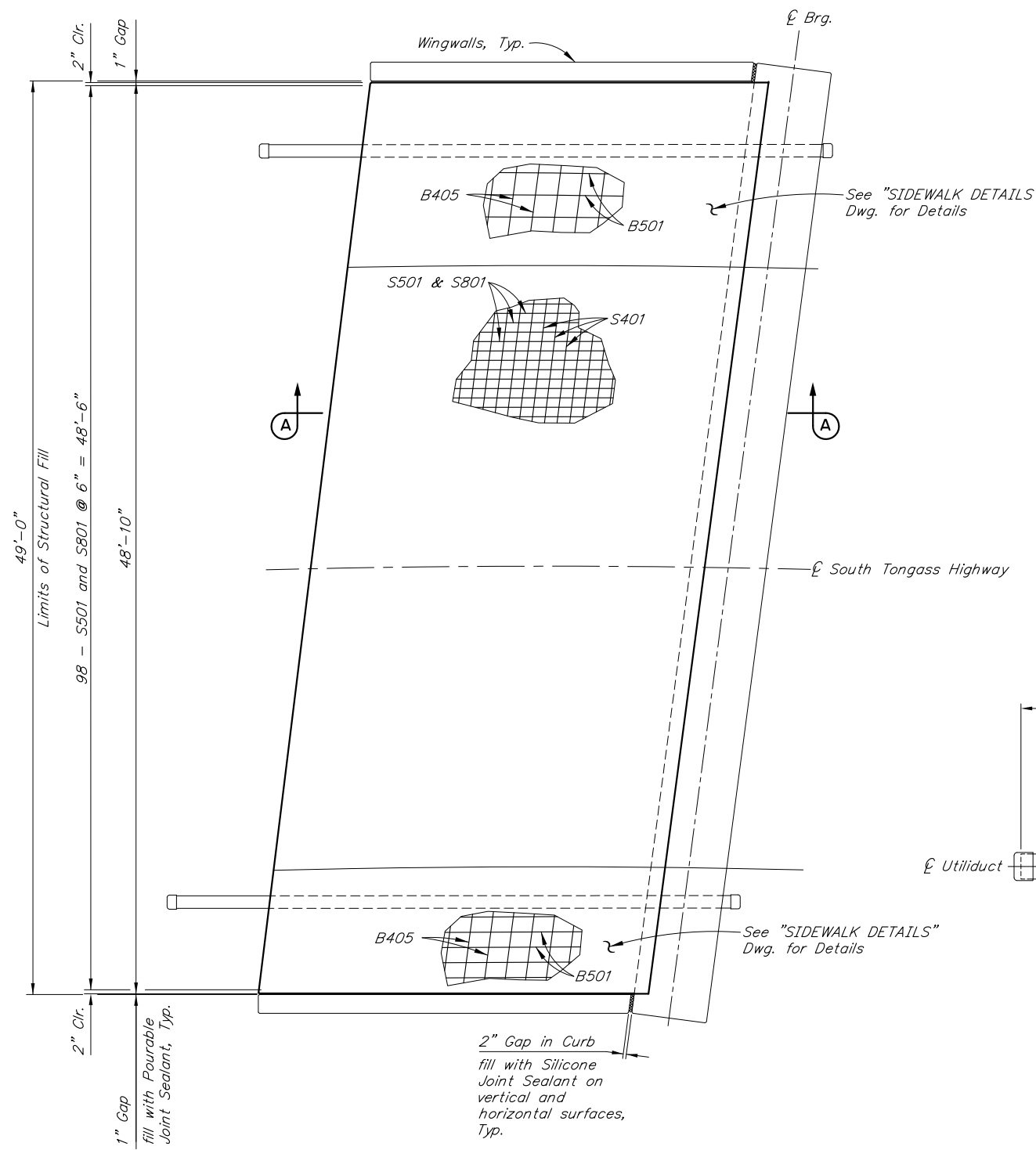


BRIDGE NO. 253  
DWG. NO. 12

STATE	PROJECT DESIGNATION	YEAR	SHEET NO.	TOTAL SHEETS
ALASKA	SFHwy00072/0902043	2019	N13	TtShts

REINFORCING STEEL - ONE APPROACH SLAB					
MARK	NOTE	SIZE	NO.	LENGTH	BENDING DIAGRAM
S401	E	4	62	48'-11"	---
S501	E	5	98	20'-5"	---
S502	E	5	31	5'-0"	BENT
S801	E	8	98	20'-5"	---

E - Epoxy-Coated

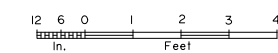


**DRAFT**

**PLAN**  
(Abutment 1 shown Abutment 2 similar)



**SECTION A-A**




R:\cod\253\253-1-APPROACH SLABS Wed, Oct/03/18 01:28pm

DESIGNED BY:	Elmer Marx	CHECKED:	Checker
DRAWN BY:	Sam Sallie	CHECKED:	Elmer Marx
QUANTITIES BY:	Elmer Marx	CHECKED:	Checker

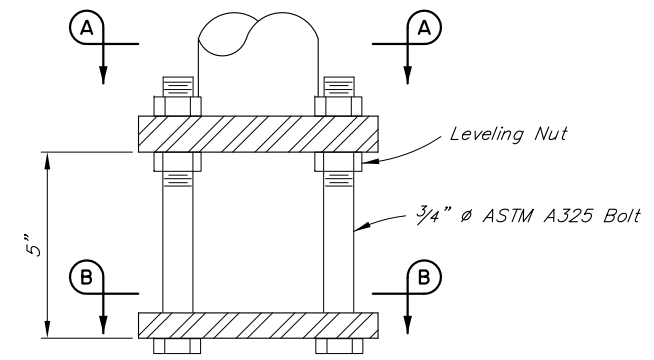
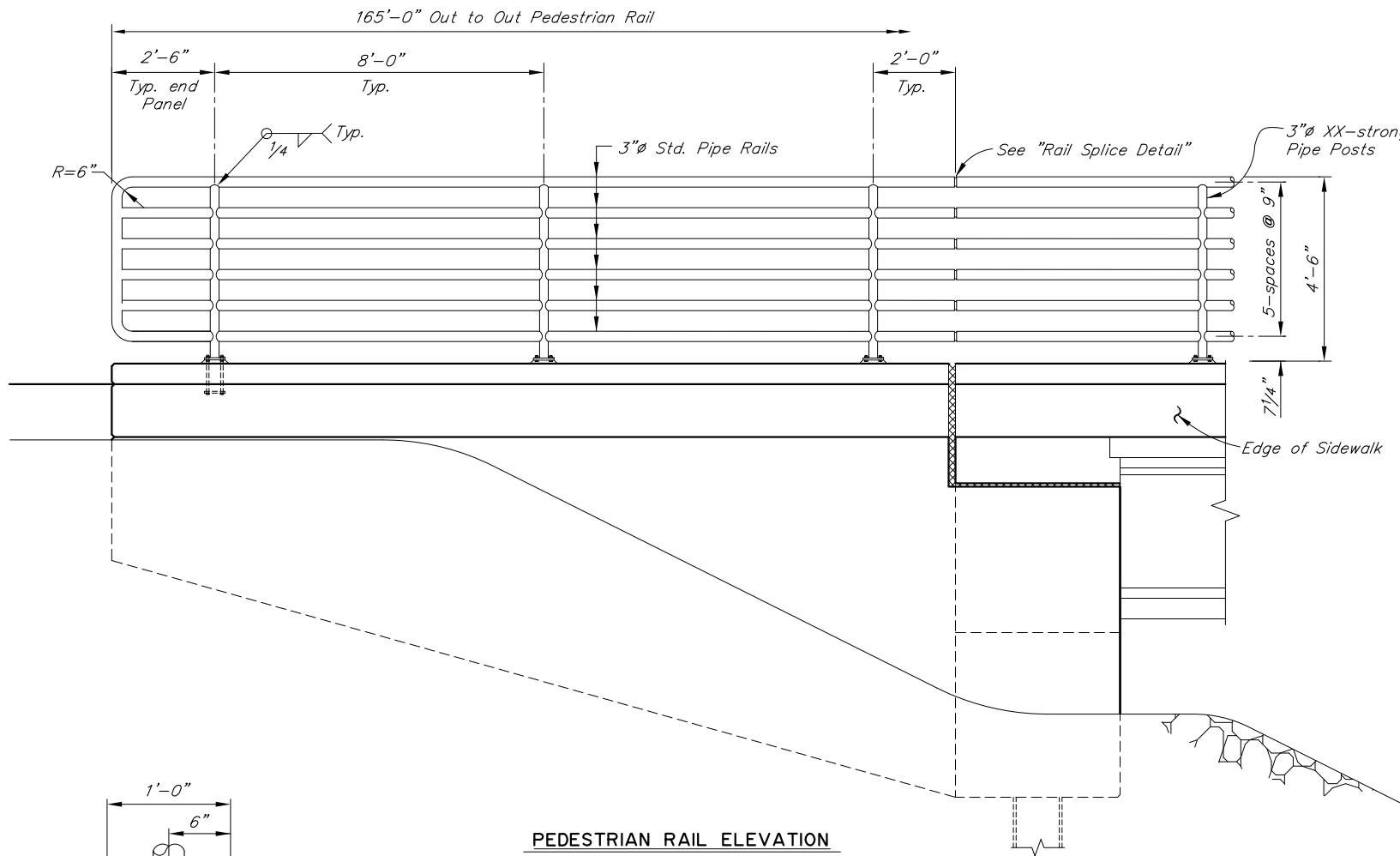
STATE OF ALASKA  
**DEPARTMENT OF TRANSPORTATION  
 AND PUBLIC FACILITIES**  
 BRIDGE SECTION  
 3132 Channel Drive  
 Juneau, Alaska 99801  
 907-465-2975

**HERRING COVE BRIDGE**  
 SOUTH TONGASS HIGHWAY  
**APPROACH SLABS**

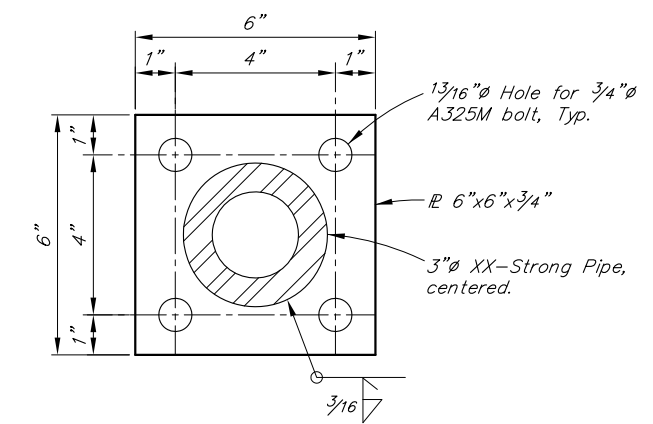


BRIDGE NO. 253  
 DWG. NO. 13

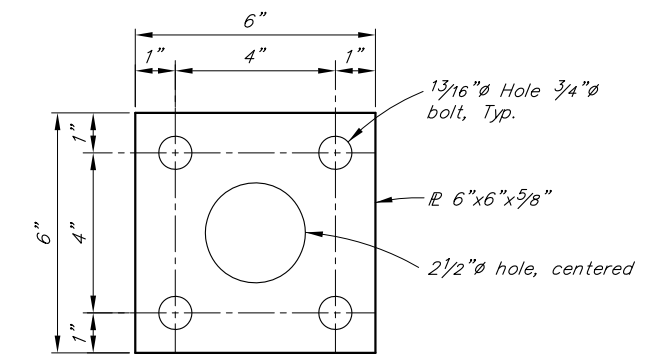
STATE	PROJECT DESIGNATION	YEAR	SHEET NO.	TOTAL SHEETS
ALASKA	SFH00072/0902043	2019	N14	TtShts



**DETAIL "A"**  
No scale

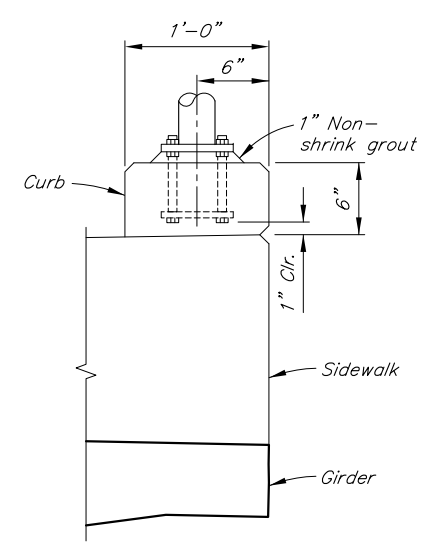


**SECTION A-A**  
No Scale

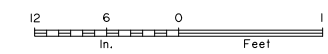


**SECTION B-B**  
No Scale

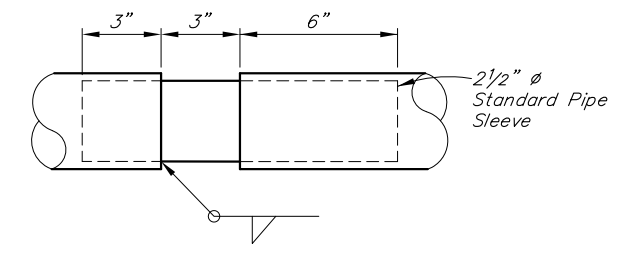
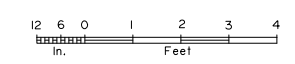
**DRAFT**



**SECTION AT EDGE OF DECK**



**PEDESTRIAN RAIL ELEVATION**



**RAIL SPLICE DETAIL**

No scale

**NOTES:**

- Galvanize all steel for railing in accordance with AASHTO M111.
- Install all rail posts plumb. Space Rail Splice @ 40' intervals, max.
- Rail splice required at panel over abutment expansion joint.
- See "Framing Plan" for rail post layout.

R:\cod\253\253-1-PED RAIL Wed, Oct/03/18 01:28pm

DESIGNED BY:	Elmer Marx	CHECKED:	Checker
DRAWN BY:	Sam Sallie	CHECKED:	Elmer Marx
QUANTITIES BY:	Elmer Marx	CHECKED:	Checker

STATE OF ALASKA  
**DEPARTMENT OF TRANSPORTATION  
AND PUBLIC FACILITIES**  
BRIDGE SECTION  
3132 Channel Drive  
Juneau, Alaska 99801  
907-465-2975

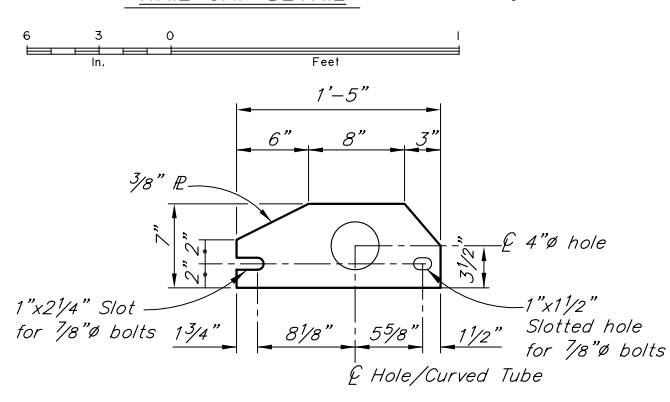
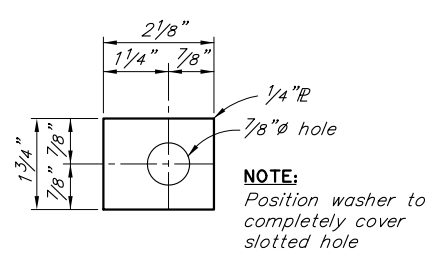
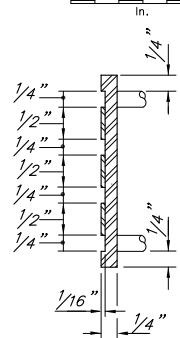
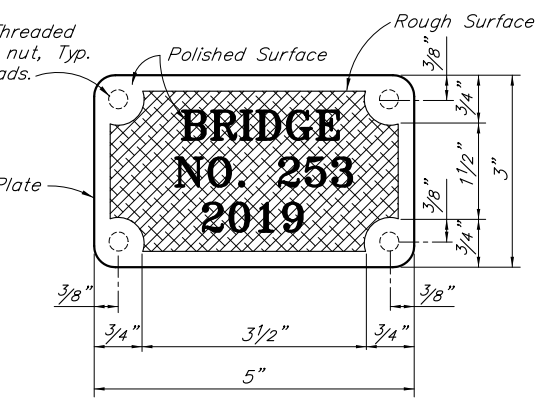
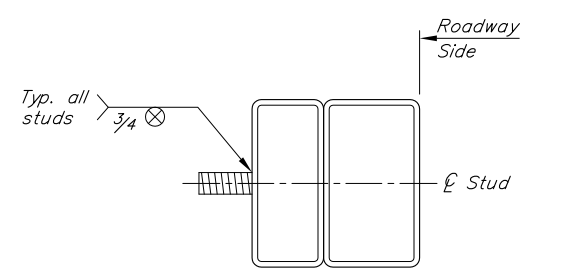
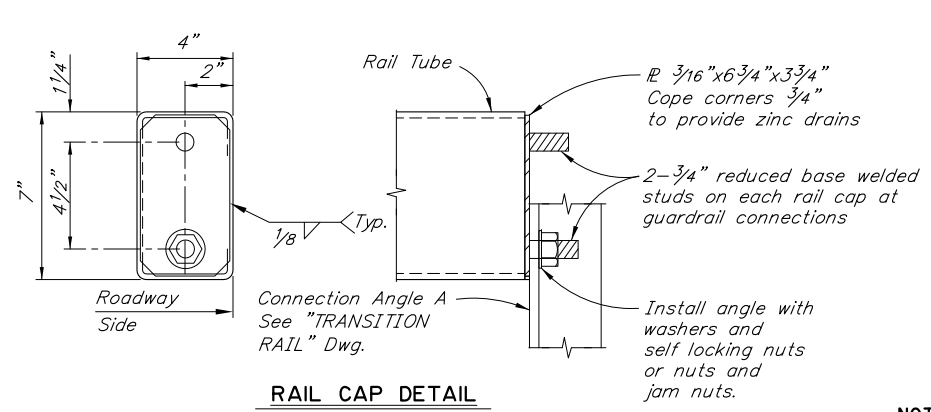
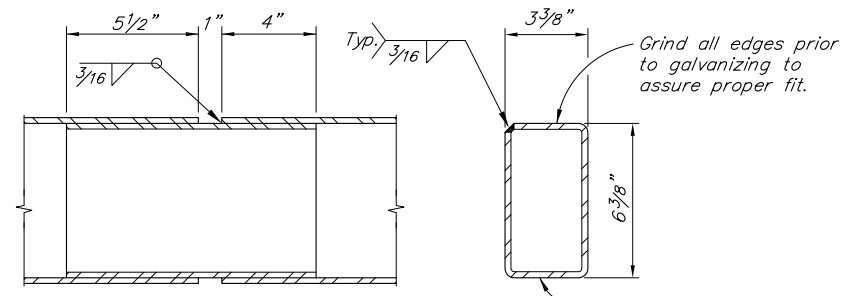
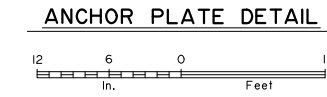
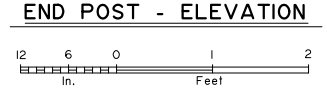
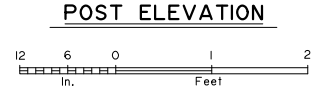
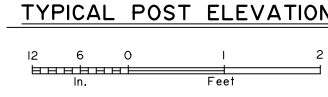
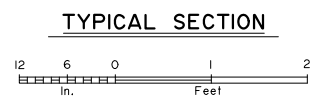
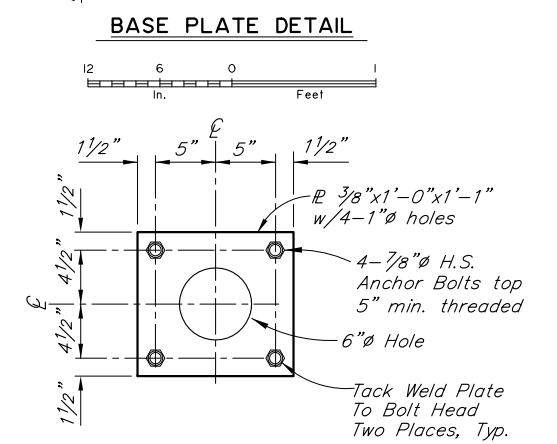
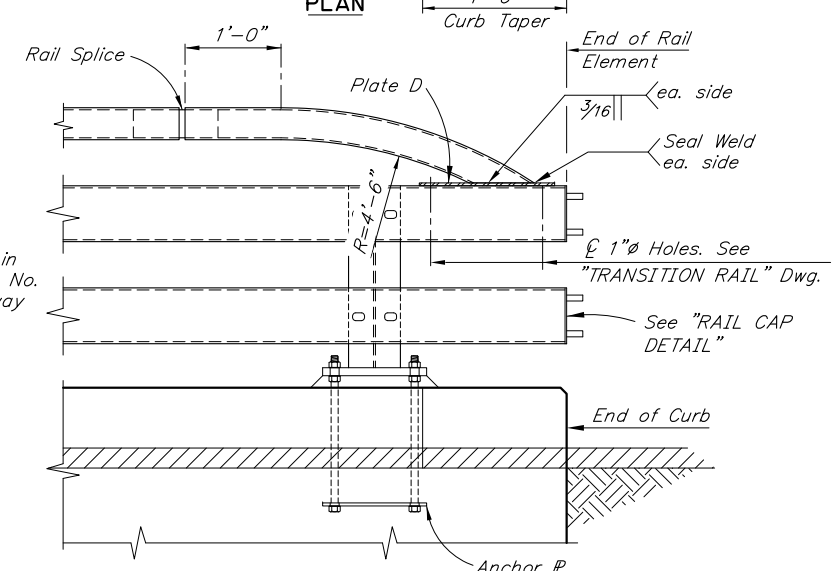
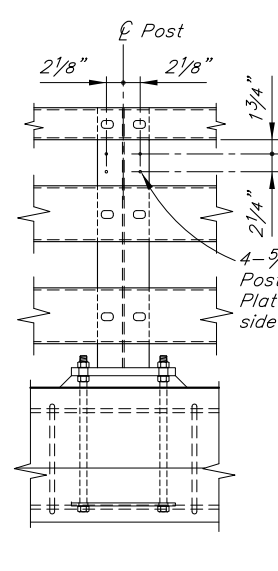
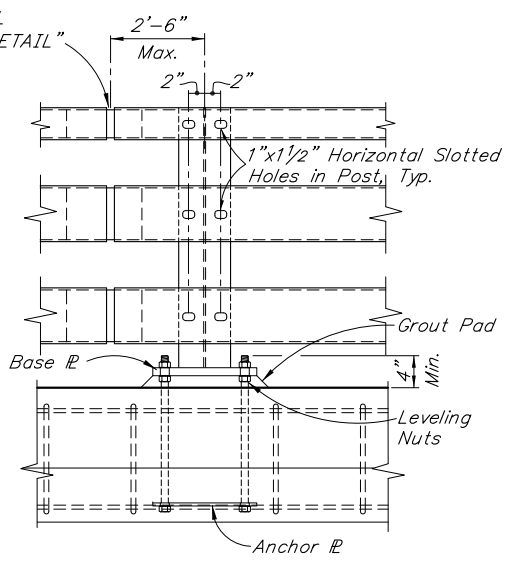
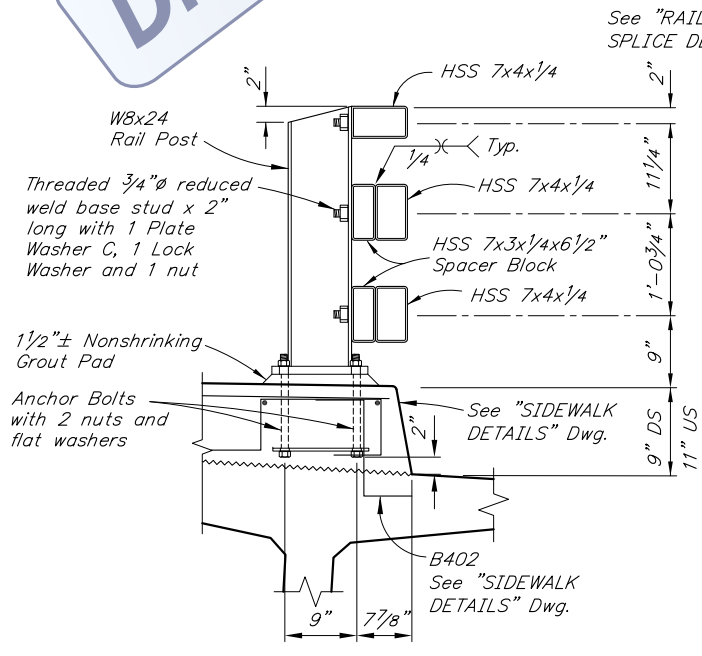
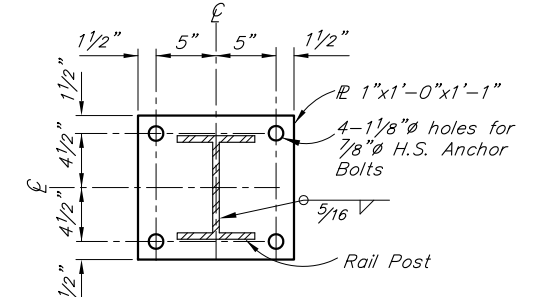
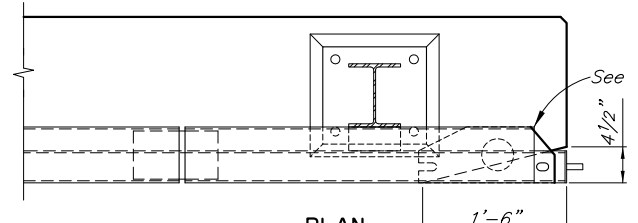
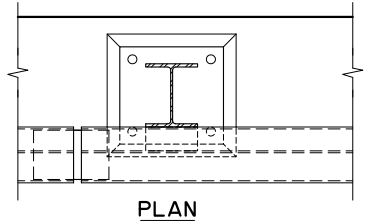
**HERRING COVE BRIDGE**  
SOUTH TONGASS HIGHWAY  
**PEDESTRIAN RAILING**



BRIDGE NO. 253  
DWG. NO. 14

STATE	PROJECT DESIGNATION	YEAR	SHEET NO.	TOTAL SHEETS
ALASKA	SFHwy00072/0902043	2019	N15	TtShts

**DRAFT**



- NOTES:**
1. Locate bridge number plates as shown (2 total) on "GENERAL LAYOUT" Dwg.
  2. Furnish bridge number plates. Use bronze with "Century" type style lettering. Use studs and nuts that conform to UNS C65100 or C65500. Braze 1/4" threaded rod to back of plate with nut - 4 required. Use locking nuts or lock washers on all machine bolts.
  3. Provide railing expansion joints at 50'-0" max. intervals. Provide a minimum of 2 rail posts between railing expansion joints. Railing expansion joints are required in rail panels that span bridge expansion joints.
  4. Install posts plumb.
  5. Use grout with a minimum 24-hour f'c of 3,000 psi.
  6. See "FRAMING PLAN AND TYPICAL SECTION" Dwg. for rail post spacing.

R:\cod\253\253-1-STEEL RAIL Wed, Oct/03/18 01:28pm

DESIGNED BY:	Elmer Marx	CHECKED:	Checker
DRAWN BY:	Sam Sollie	CHECKED:	Elmer Marx
QUANTITIES BY:	Elmer Marx	CHECKED:	Checker

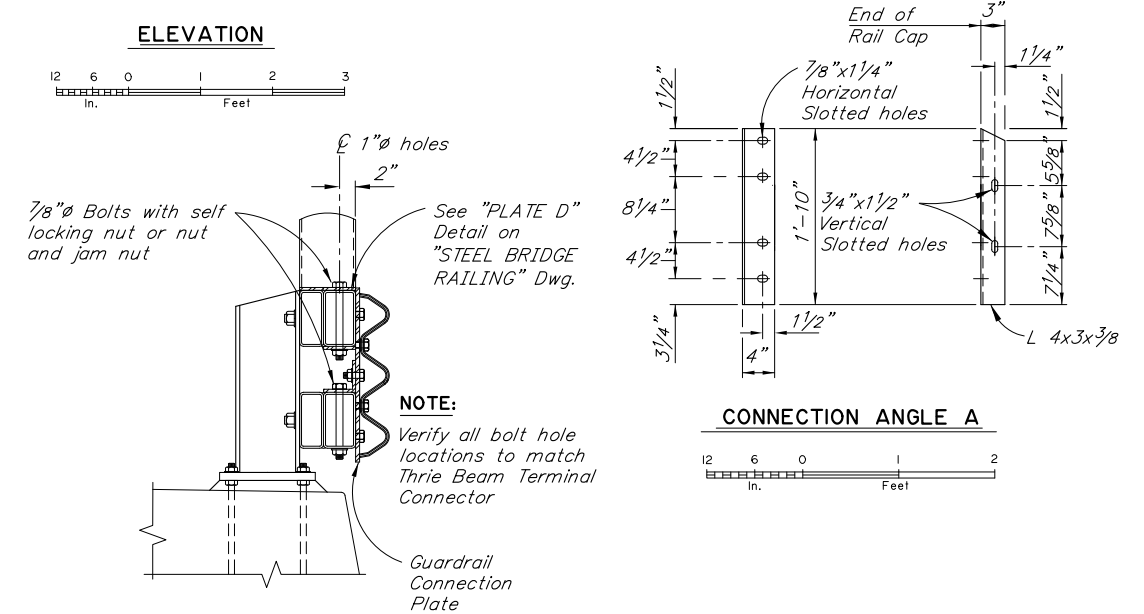
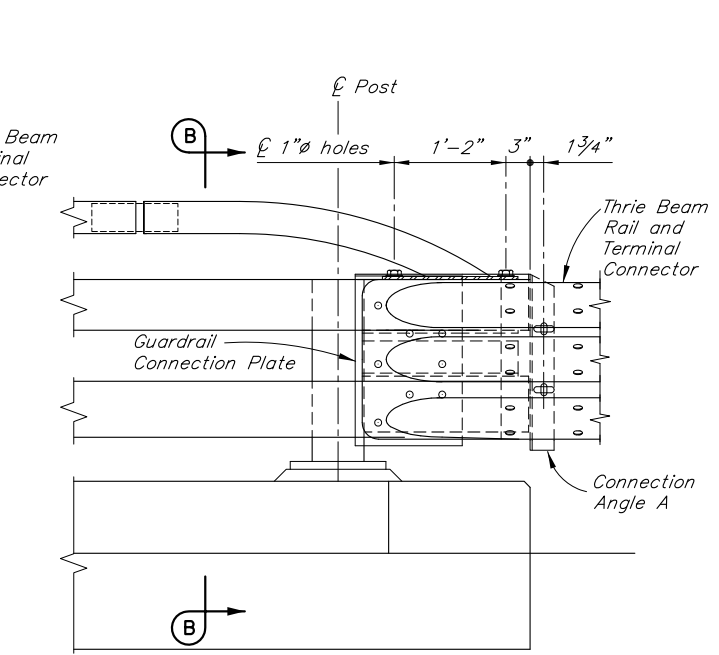
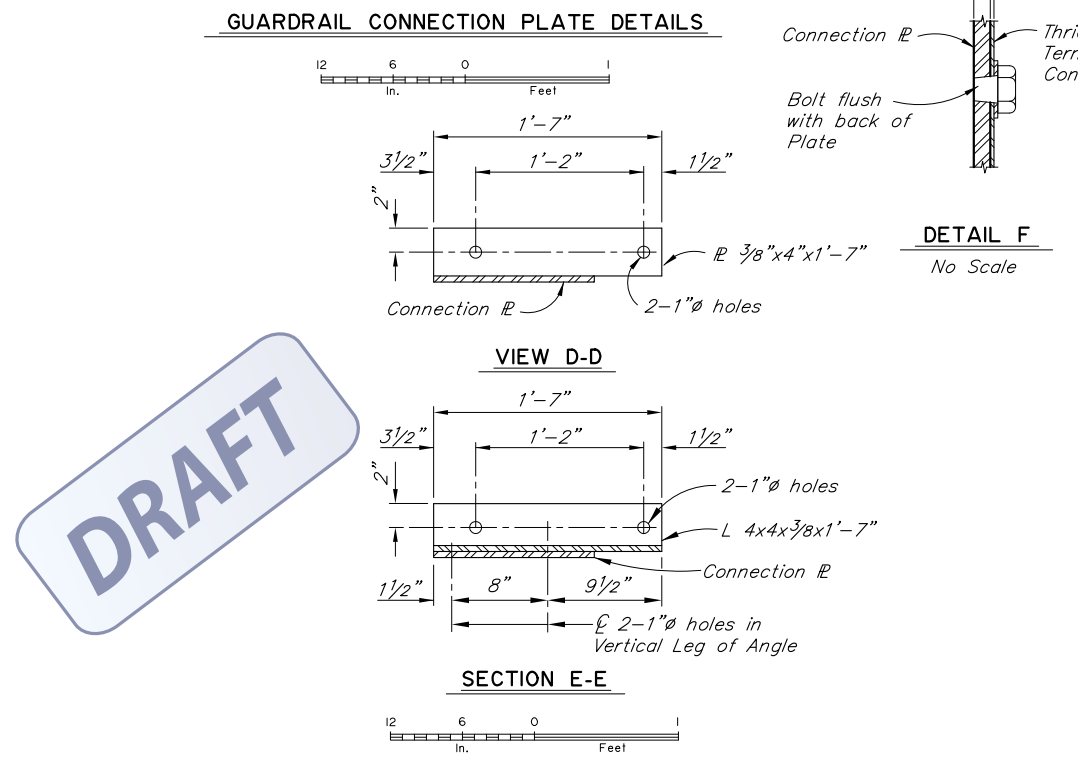
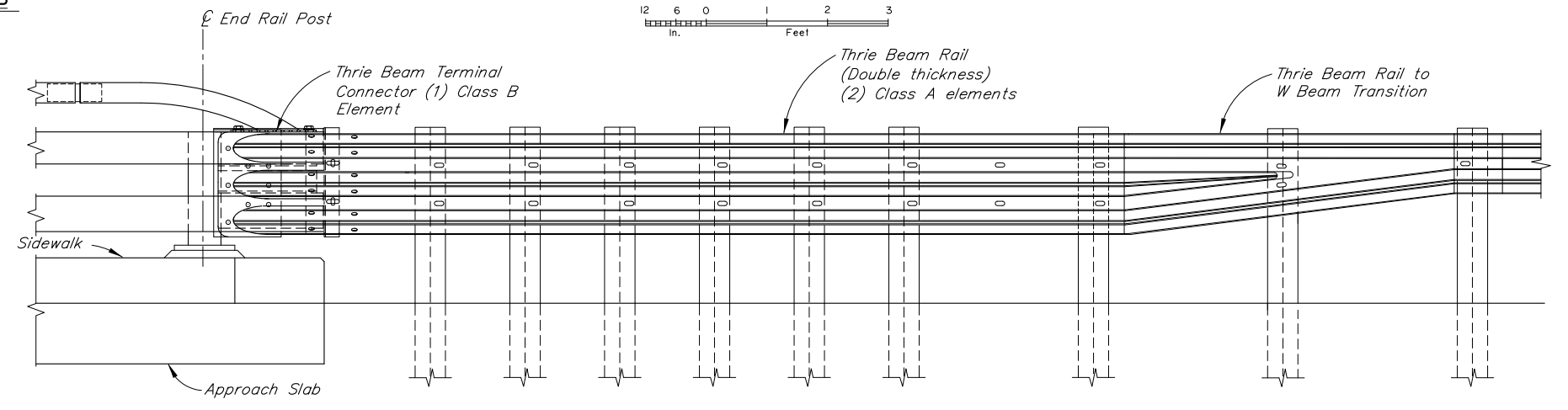
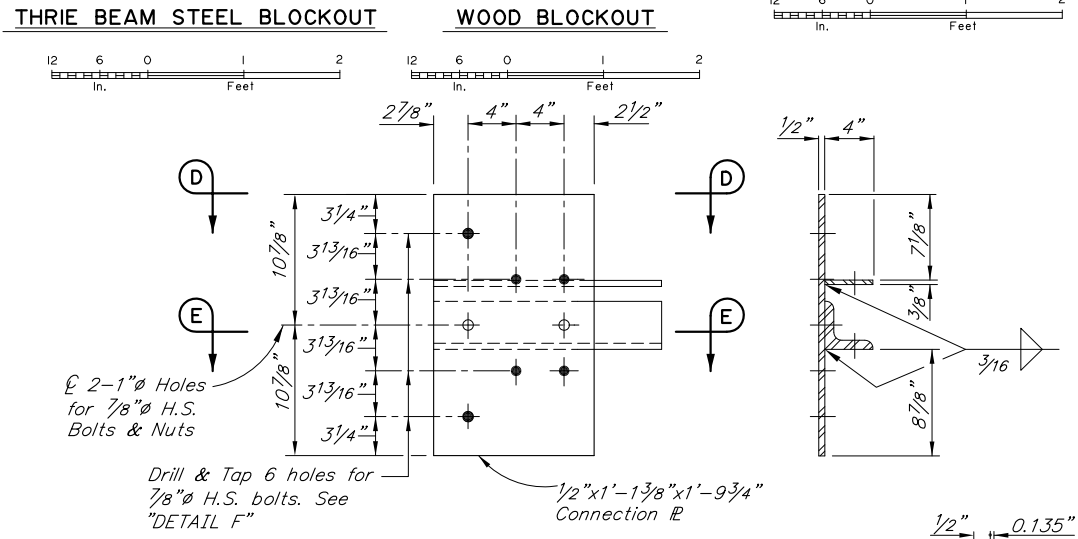
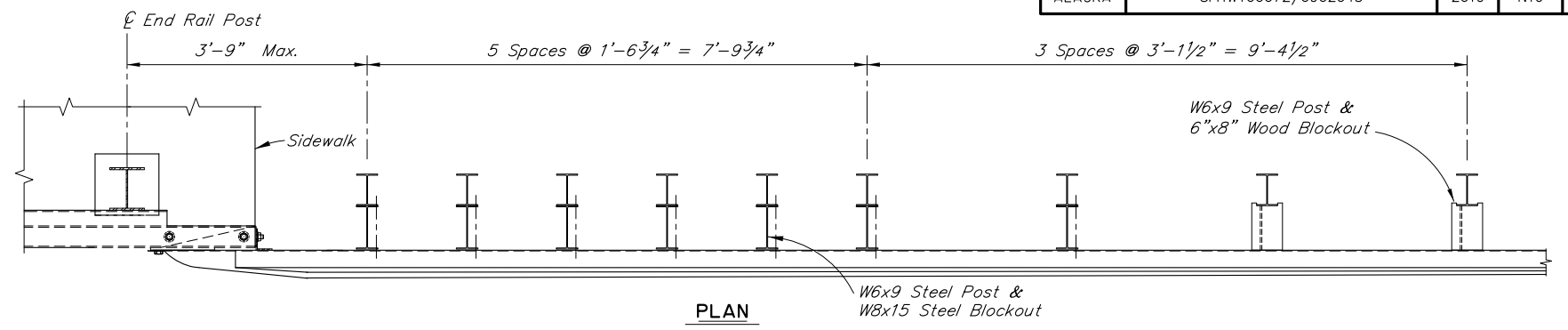
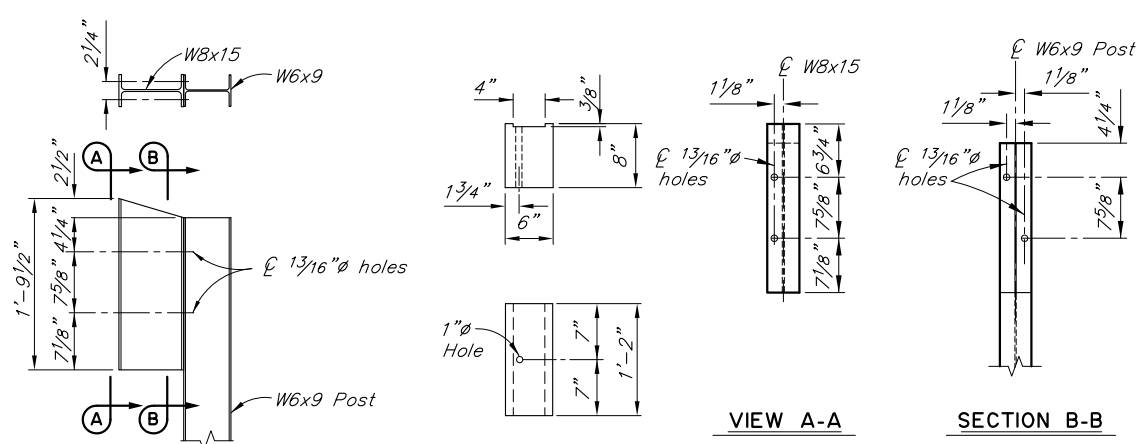
STATE OF ALASKA  
**DEPARTMENT OF TRANSPORTATION  
AND PUBLIC FACILITIES**  
BRIDGE SECTION  
3132 Channel Drive  
Juneau, Alaska 99801  
907-465-2975

**HERRING COVE BRIDGE**  
SOUTH TONGASS HIGHWAY  
**STEEL BRIDGE RAILING**



BRIDGE NO. 253  
DWG. NO. 15

STATE	PROJECT DESIGNATION	YEAR	SHEET NO.	TOTAL SHEETS
ALASKA	SFHWO0072/0902043	2019	N16	TtShts



- NOTES:**
1. Conform to G-00, G-04S, G-10 and G-31 for all guardrail details not shown.
  2. Lap approach guardrail to prevent snags from oncoming traffic.
  3. Provide 4/2" horizontal slots in approach guardrail. Adjust guardrail bolts for sliding fit.

**DRAFT**

R:\cod\253\253-1-TRANSITION Wed, Oct/03/18 01:28pm

DESIGNED BY:	Elmer Marx	CHECKED:	Checker
DRAWN BY:	Sam Sollie	CHECKED:	Elmer Marx
QUANTITIES BY:	Elmer Marx	CHECKED:	Checker

STATE OF ALASKA  
 DEPARTMENT OF TRANSPORTATION  
 AND PUBLIC FACILITIES  
 BRIDGE SECTION  
 3132 Channel Drive  
 Juneau, Alaska 99801  
 907-465-2975

**HERRING COVE BRIDGE**  
 SOUTH TONGASS HIGHWAY  
**THRIE BEAM TRANSITION RAILING**



BRIDGE NO. 253  
 DWG. NO. 16